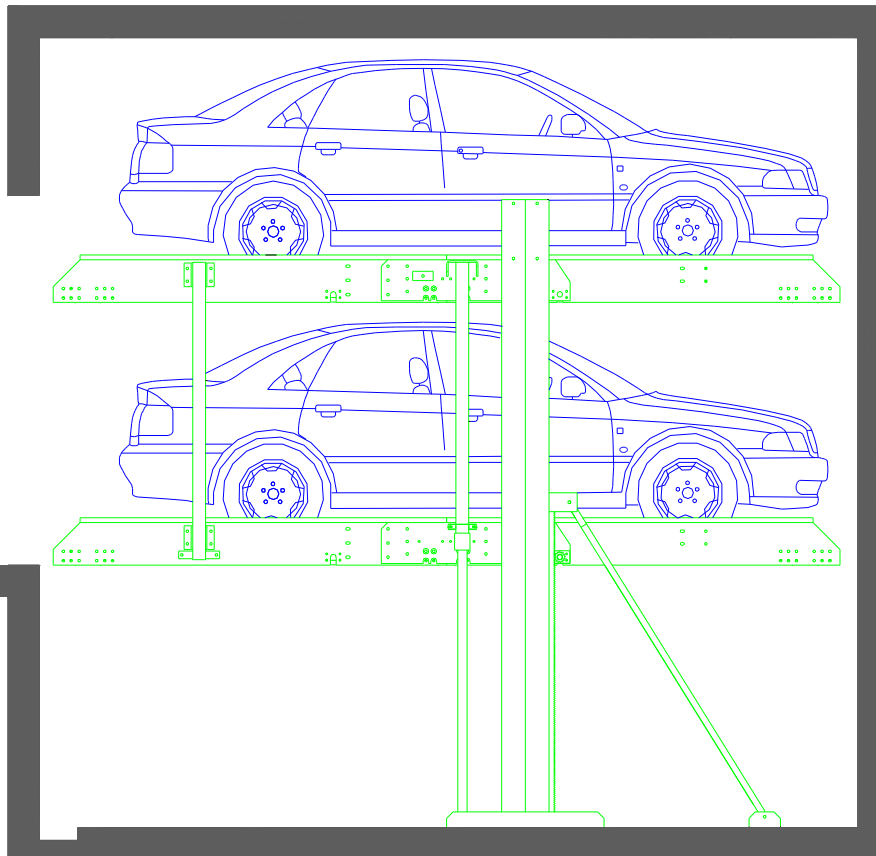


KLEEMANN™
Your 1st Choice in Lifts

LIFTING SYSTEMS DEPARTMENT

Hydraulic Parking Systems KPS 2-4



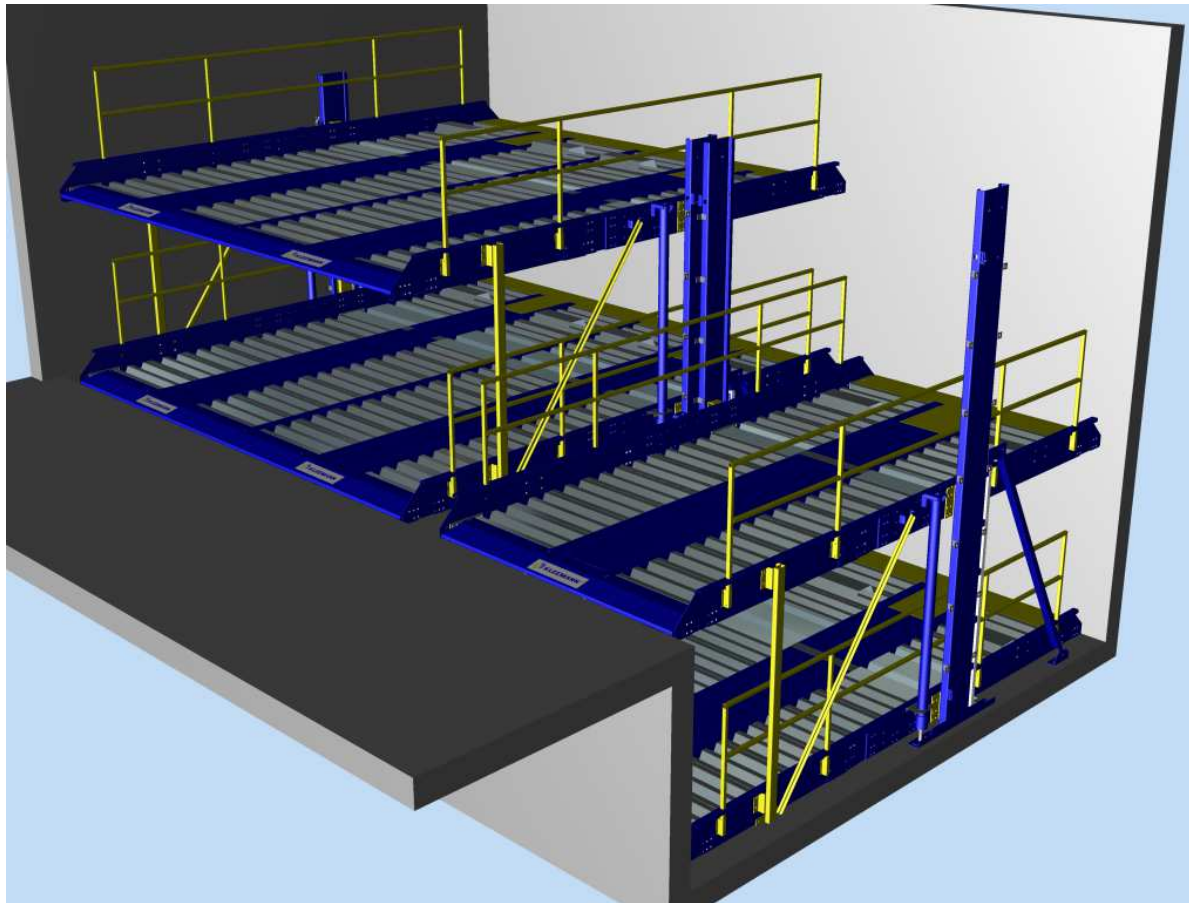
The most common type of parking system

Advantages

- Suitable for different type of cars
- Independent parking place

Create a shaft with the appropriate dimensions

Hydraulic Parking Systems KPS 2-4



Specifications

Rated Load: 4000 – 8000kg

Num of vehicles: 2 –4

Num of stops: 2

Max platform speed: 0.05m/sec

Pit depth: 1750 –1900-2000mm

Headroom: 3250 –3400-3500mm

Platform width:

2250-2500-2700mm

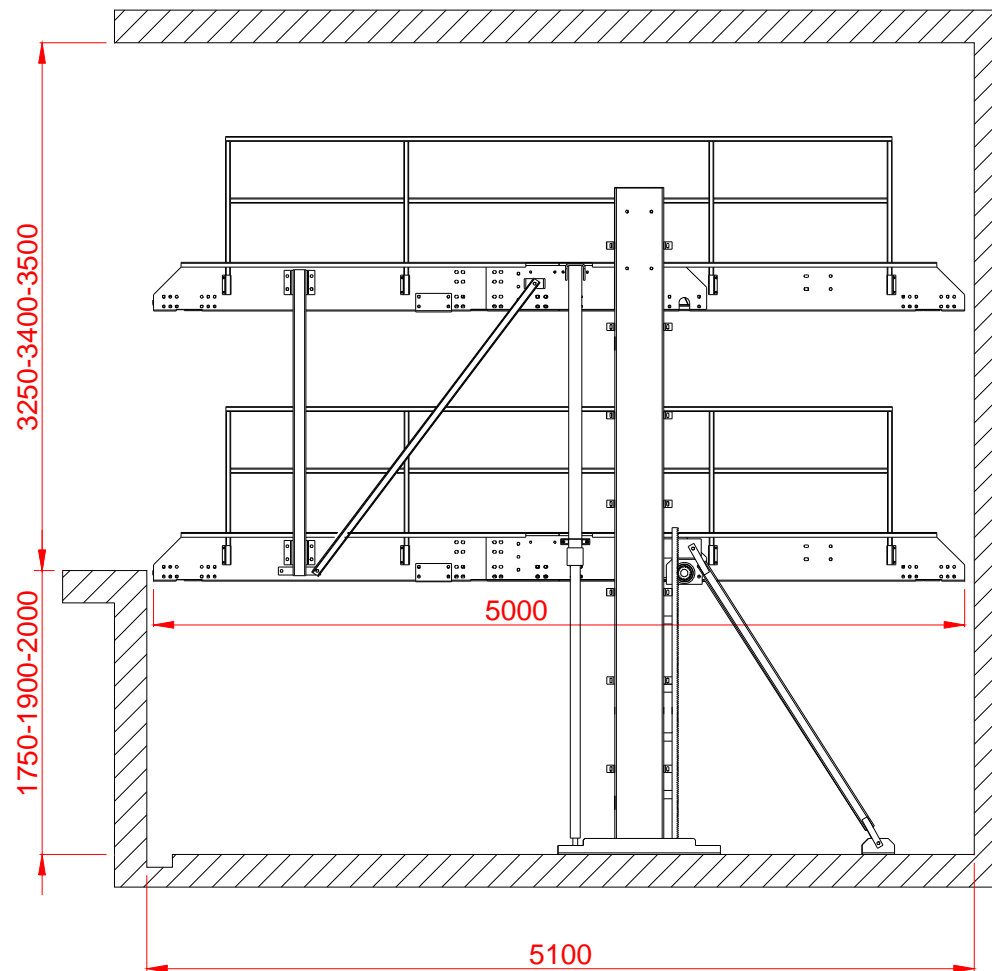
4500-4800-5000mm

Piston: $\Phi 60$ massif

Motor: 1.5Kw/380V KPS 2

3.0 Kw/380V KPS 4

Hydraulic Parking Systems KPS 2-4



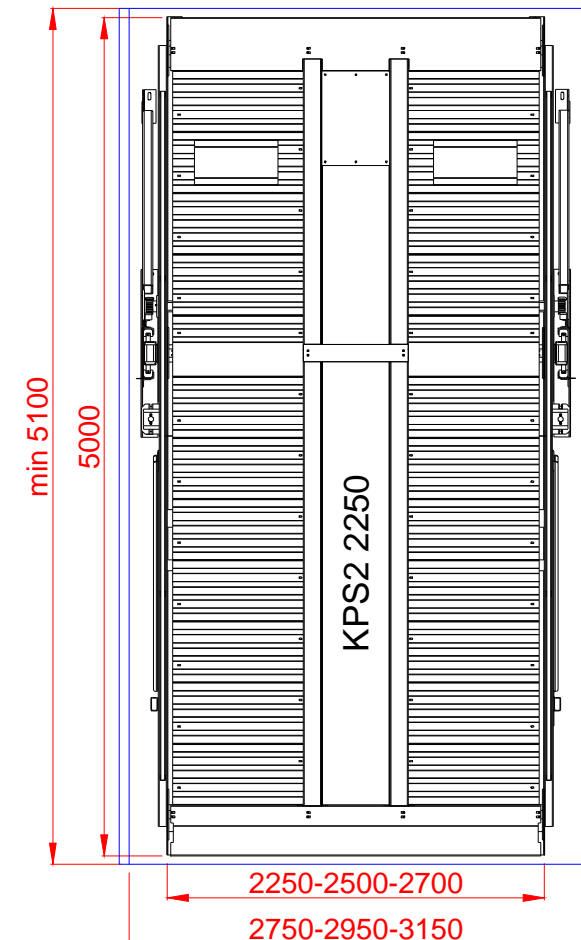
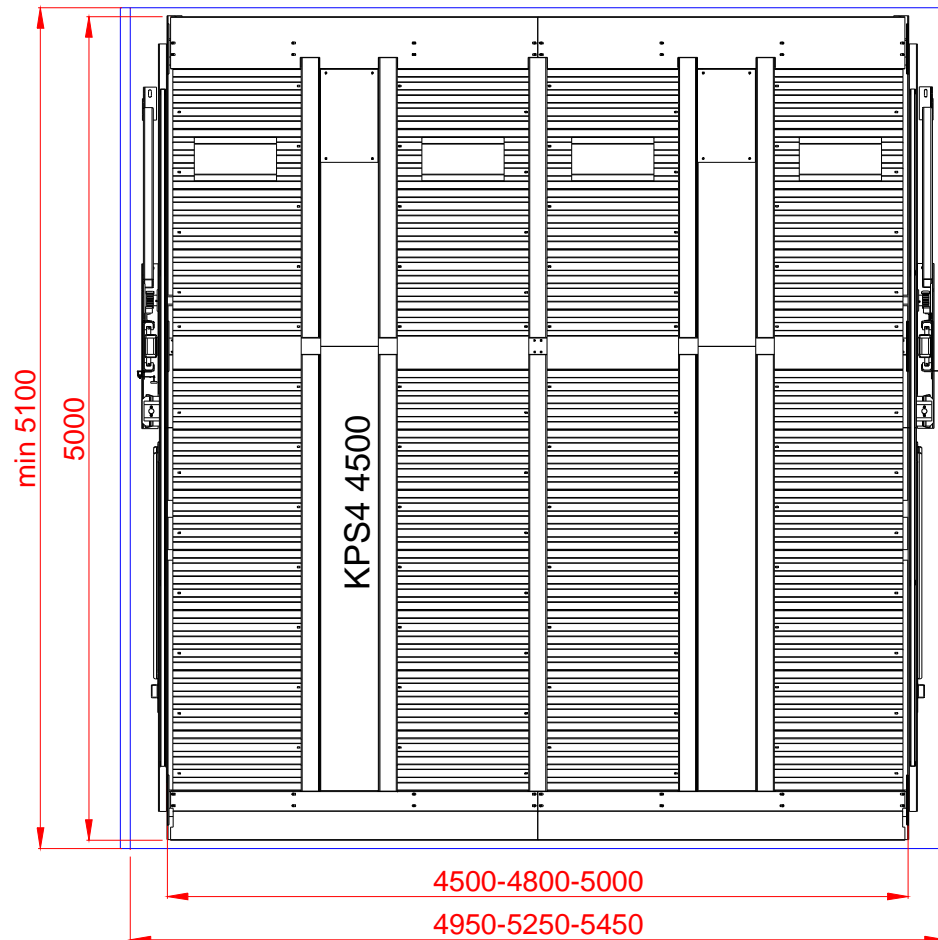
Distance between platforms

Kps 175 : 1560mm

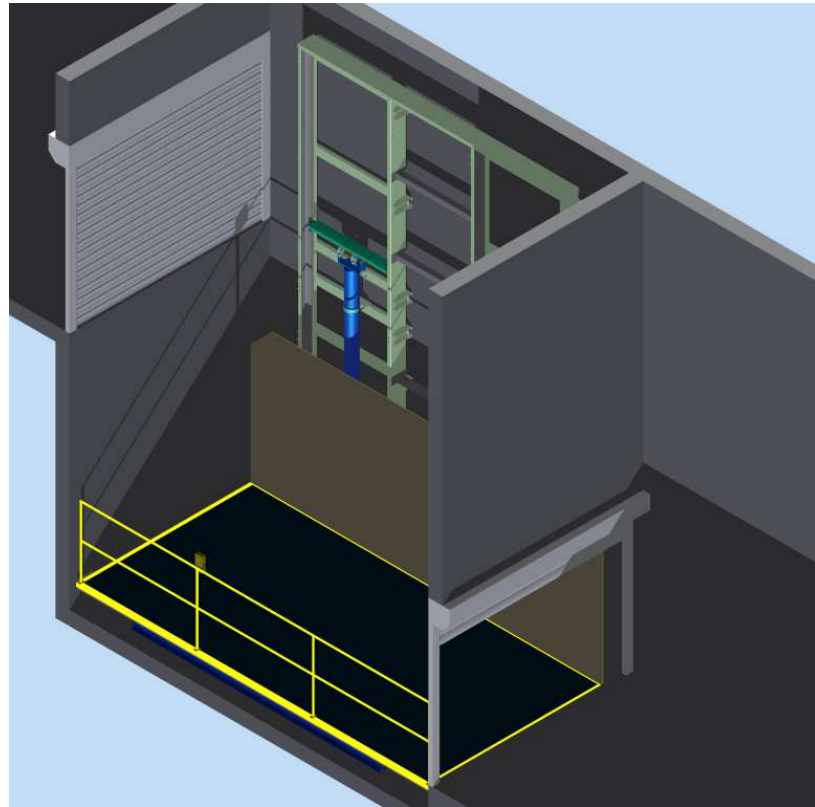
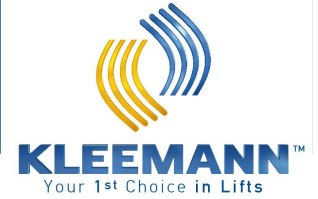
Kps 190: 1714mm

Kps 200: 1814mm

Hydraulic Parking Systems K^PS 2-4



KTS 2/M

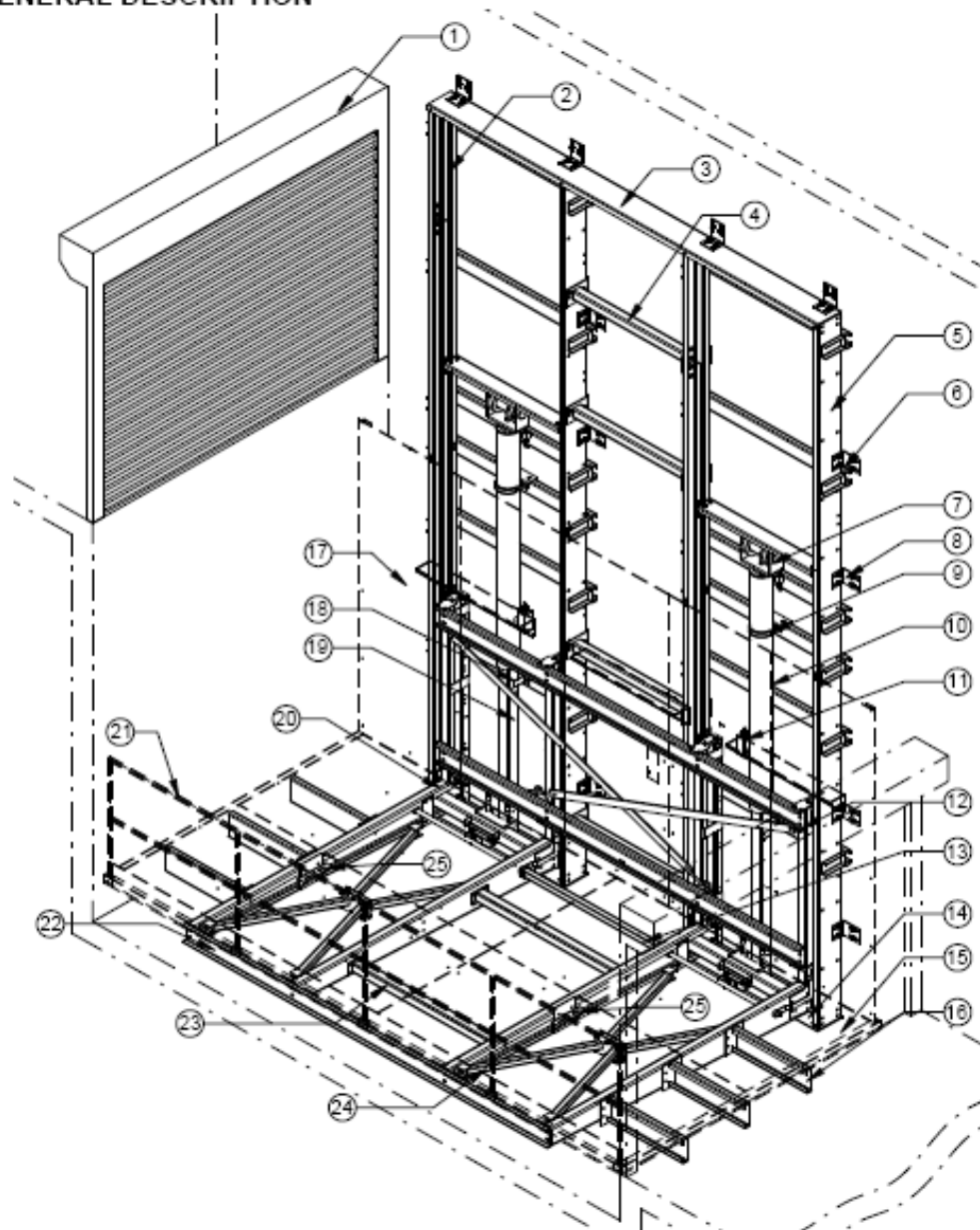


The KTS 2/M system is a hydraulic system for the vertical transportation of cars.
It is designed and manufactured according to the Machinery Directive 2006/42/EC.
EC Type Examination Certificate by Lift Instituut.

Specifications

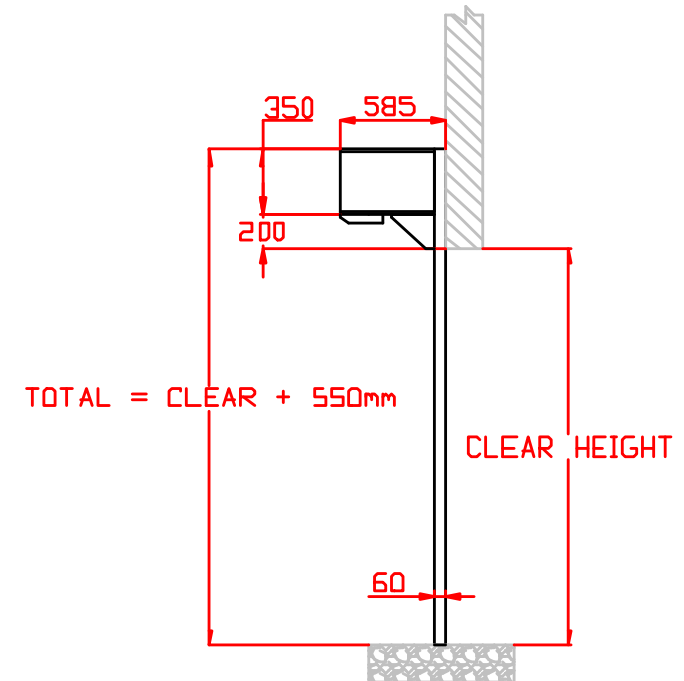
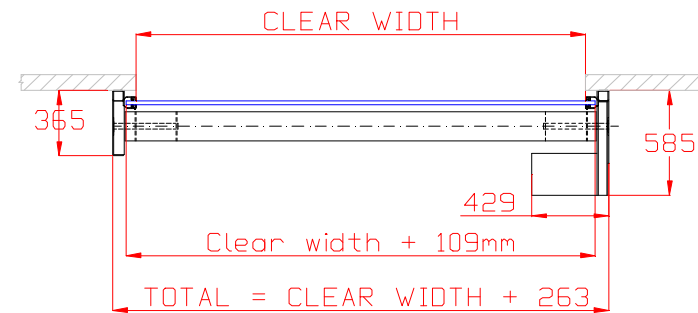
- Rated Load: max 2200kg – 3000kg
- Suspension: 2:1
- Travel: max 12m (KTS 2200) – max 10m (KTS 3000)
- Max num of stops: 4
- Required pit depth: 400mm – 500mm(KTS 3000)
- Required Headroom: 2700mm – (2400mm)
- Platform dimensions (W) 2100 – 2500mm (L) 4500-5500mm
- Shaft dimensions: (W) 2500-2900mm (L) 4570-5570mm
- Guide rails: T 125x82x16 4 pieces
- Piston: KZA C 100 x 5 - 100 x 8.5 – 100 x 7 (KTS 3000)
- Block of valves: Blain KV1S - Pump 75lit/min – Motor 9.5Kw/380V- Tank T150
- KTS 3000 : Motor 12 Kw /380V Tank T250
- Chains: 4 pieces BL 634

3. GENERAL DESCRIPTION

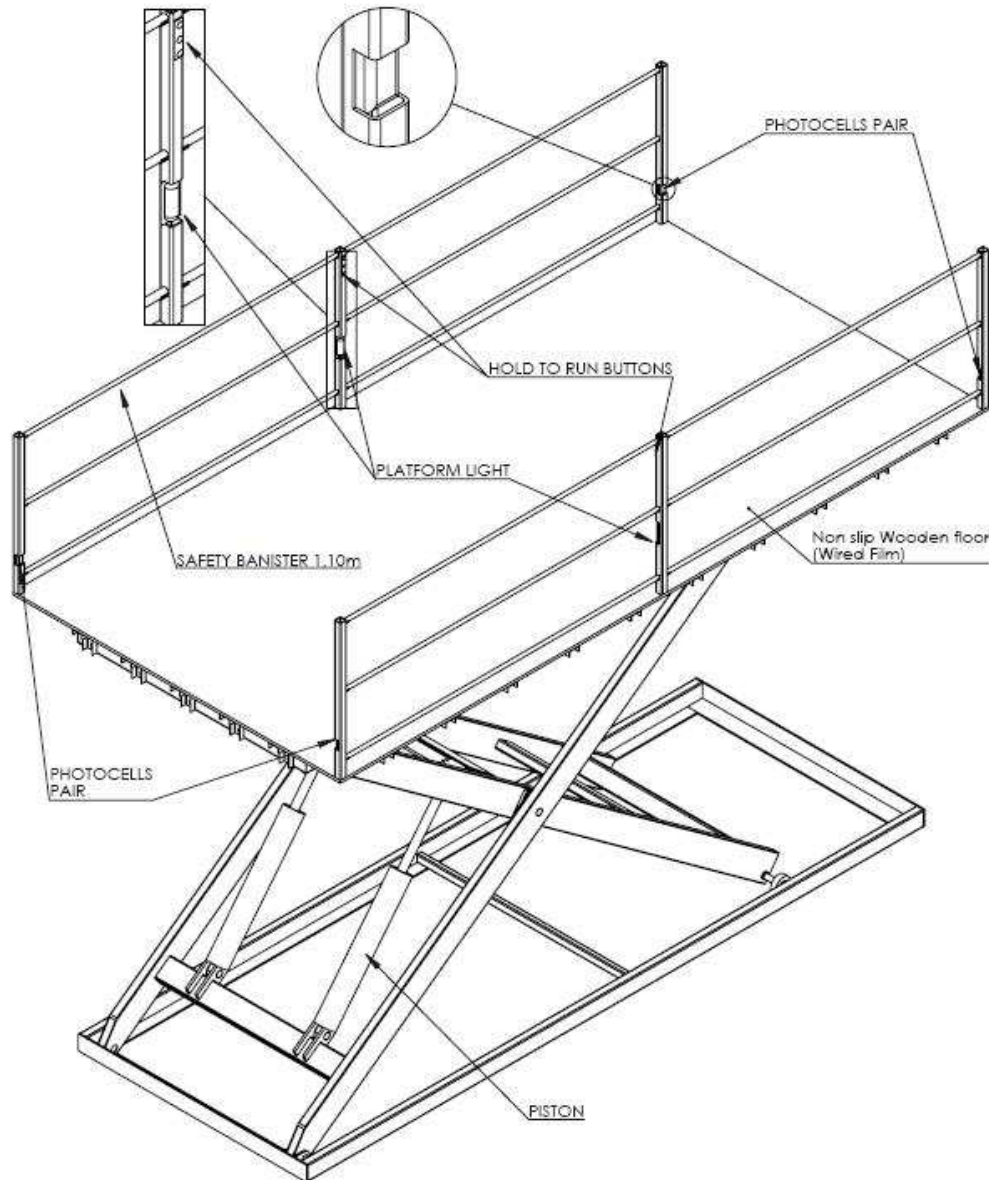


1. Floor Roller Shutter
2. Guide rail 125x82x16
3. Upper frame connection beam
4. Side connection beam
5. Frame side
6. Frame brackets
7. Pulley
8. Frame assembly bracket
9. Ram bracket
10. Ram
11. Rupture valve
12. Chassis connection beam
13. Safety gear joint
14. Oil waste collector
15. Platform floor
16. Platform extension beams
17. Platform side covers
18. Ram beam support
19. Ram beam
20. Lift chassis
21. Platform balustrade
22. Front chassis connection beam
23. Chassis middle connection beam
24. Chassis buttresses
25. Base for the electronic weight device

Roller Shutters



Scissor Lifts (cars)

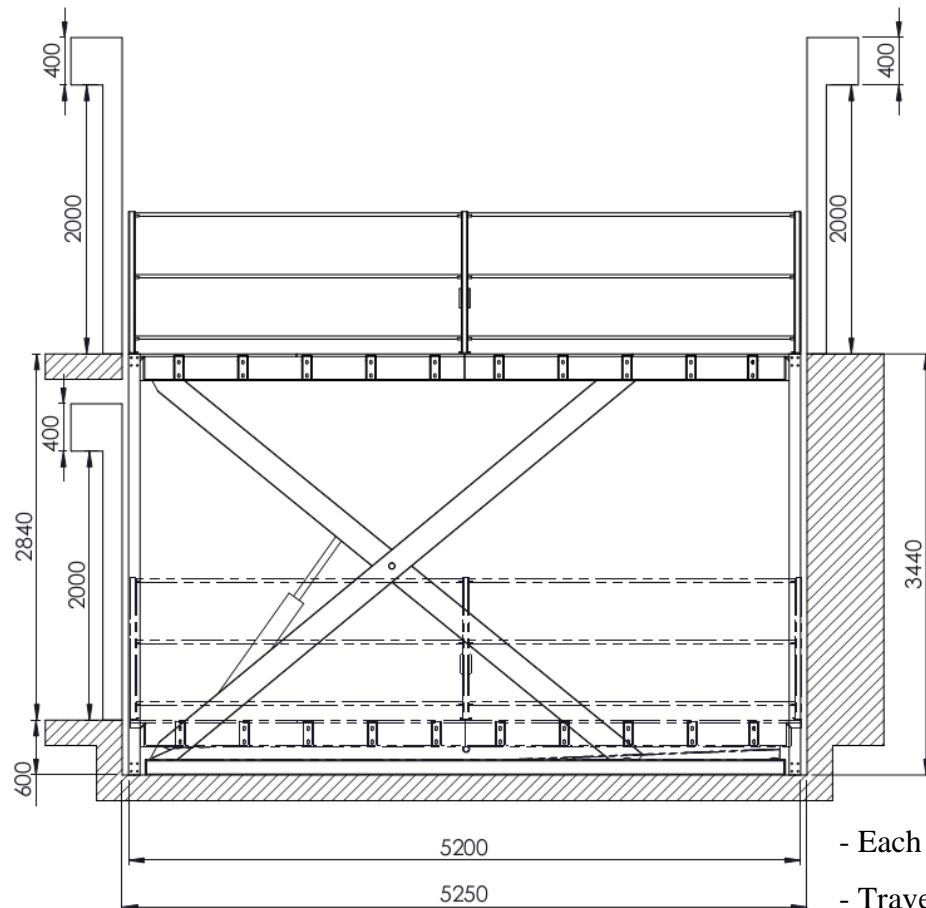


KLEEMANN – OSCAR

- Rated load: 2500kg (3000kg)
- Platform dimensions: 2500X5000mm
- Travel: max 3200mm
- Pit depth: 500-600mm
- Headroom: 2500mm
- Guide rails: T89x62x16
- Motor 5.5Hp/380V
- Pump 14cc 3000rpm
- Oil tank 40lit
- Landing doors: Roller shutters

EC Type Examination Certificate for max Rated Load 3000kg

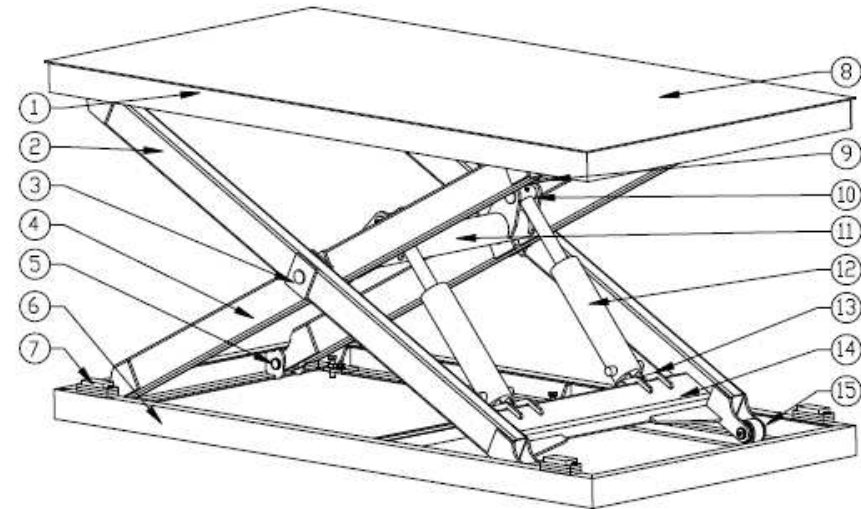
Scissor Lifts (cars)



- Each cylinder features a parachute valve in case of rubber hose rupture.
- Travel limit switches
- Manual descent switch in case of power failure.
- Pressure relief valve
- Control pressure gauge
- Analogue pressure sensor

EC Type Examination Certificate for Rated Load max 3000kg

Scissor Lifts (goods)

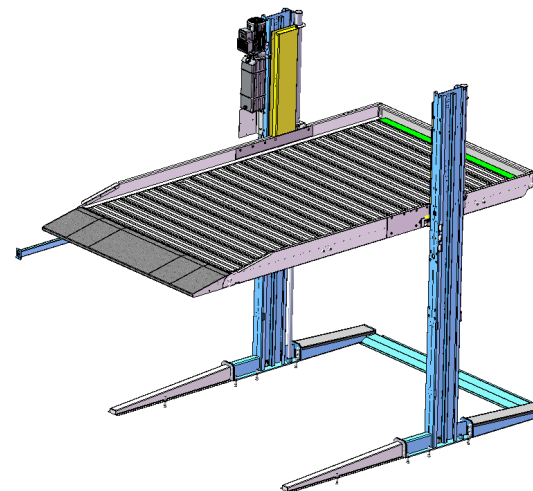
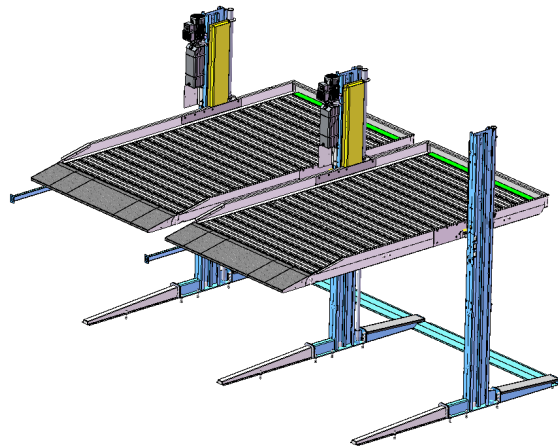
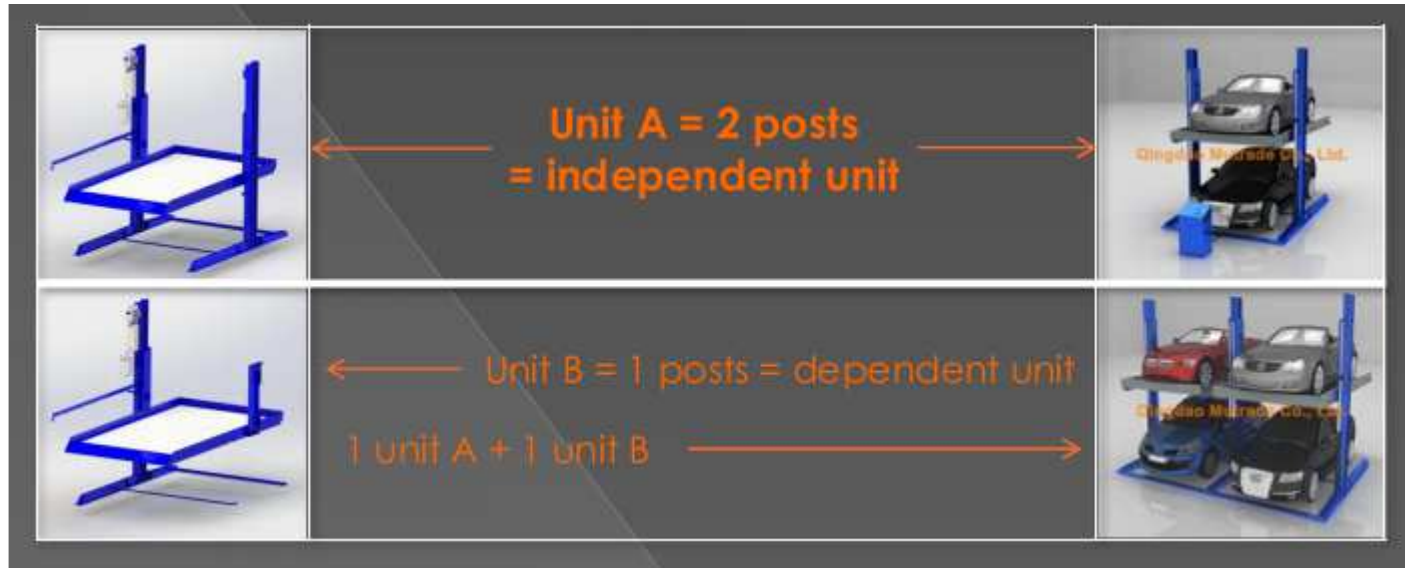


1.	Platform	9.	Inner scissors connection
2.	Outer scissor arm	10.	Piston connection (up)
3.	Scissor axle	11.	Scissor central beam
4.	Inner scissor arm	12.	Piston
5.	Scissor arm connection joint	13.	Piston connection (down)
6.	Base frame	14.	Outer scissors connection
7.	Buffer	15.	Arm wheel roller
8.	Platform floor		

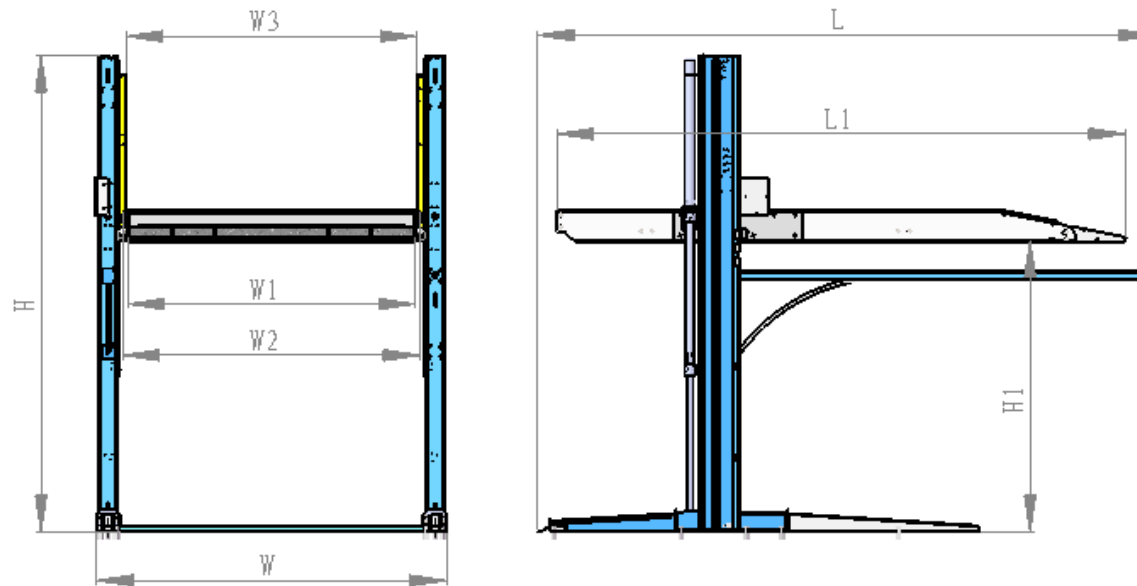
Single phase scissor: Travel = Max dimension of the platform X 0.6

SPECIAL PARKING SYSTEMS

Parking System KPS 2/D CE Marking

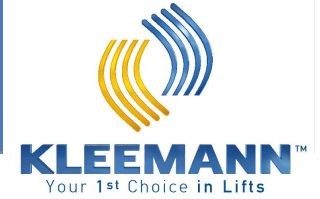


SPECIAL PARKING SYSTEMS



Total length	L	4529mm
Platforms length	L1	4166mm
Total width	W	2561mm
Total height	H	3500mm
Clear height	H1	0 ≤ H1 ≤ 2100
Clear width	W1	2100mm
Platform's width	W2	W1 + 74

SPECIAL PARKING SYSTEMS

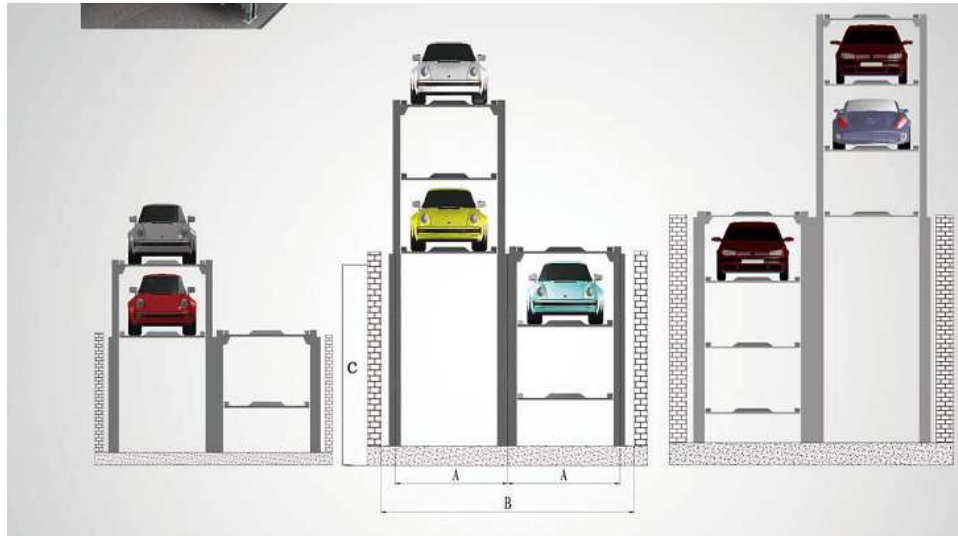


Rated load: 2000kg

Ideal for available height min
2850mm



SPECIAL PARKING SYSTEMS

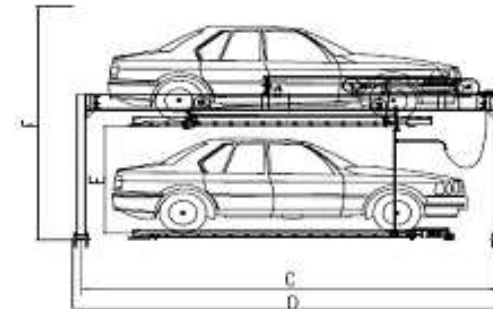
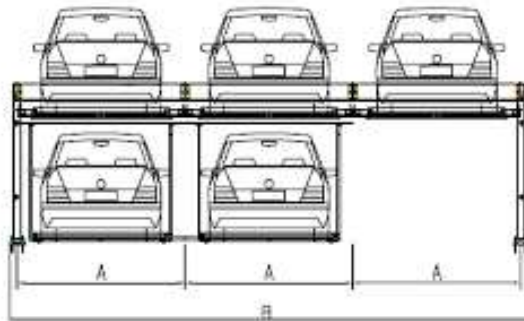


2-3-4 levels underground parking system

Parking	Type	PFPP2	PFPP3	PFPP4
Dimensions (mm)	Single Vehicle Weight (kg)	≤ 2000	≤ 2000	≤ 2000
	a	2500/2700	2500/2700	2500/2700
	b	≤ 5400/5800	≤ 5400/5800	≤ 5400/5800
	Lenth of the platform	5400	5400	5400
	d	2300/2500	4000/4200	NA/5900
Drive Mode	Motor/Hydraulic			
Motor	(kw)	4	5.5	7.5
	Vertical speed(seconds)	<60		

SPECIAL PARKING SYSTEMS

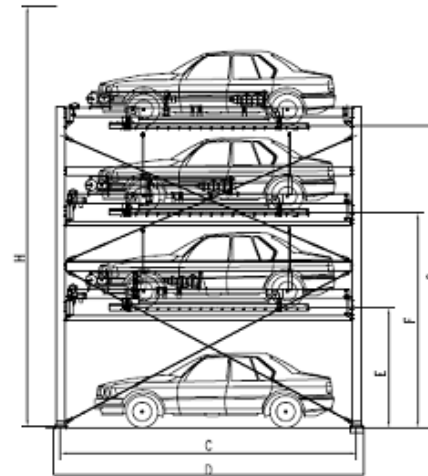
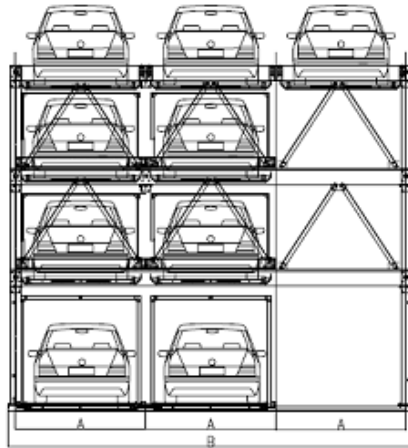
Automatic systems 5 parking places



Car loaded	(mm)	4700×1800×1450	5000×1850×1550	5300×1900×2050
	wieght (Kg)	≤1700	≤2000	≤2350
Measurement	A (mm)	2300	2400	2500
	D (mm)	5550	5850	6150
	C (mm)	5310	5610	5910
	E (mm)	2150		
	B (mm)	N×A+240		
	F (mm)	≥3800		
Actuating Type		Hydraulic / Motor		
Motor	Lifting	Power	3kw	2.2kw
		Speed	8-12m/min	4m/min
	Sliding	Power	0.2KW	
		Speed	8m/min	
Interface	Button Control, touch screen, Card, and Manual operation			
Control	PLC			
Power	380V、50Hz 、3 Phase			
Average collecting time	≤50 second			

SPECIAL PARKING SYSTEMS

Automatic parking system 4 floors

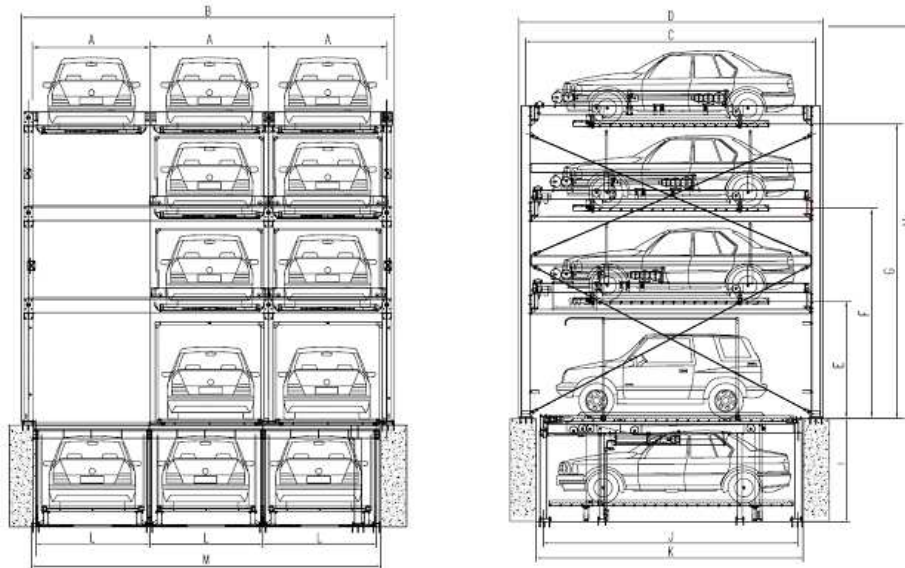


Car loaded	(mm)	4700×1800×1450	5000×1850×1550	5300×1900×2050
	wieght (Kg)	≤1700	≤2000	≤2350
Measurement	A (mm)	2500	2600	2700
	D (mm)	6000	6200	6400
	C (mm)	5650	5850	6050
	E (mm)	2500		
	B (mm)	N×A+350		
	G (mm)	6100=2500+1800*2		
	F (mm)	4300=2500+1800		
	H (mm)	≥7800		
Actuating Type		Hydraulic / Motor		
Motor	Lifting	Power	11kw	3.7kw
		Speed	15-18m/min	6m/min
	Sliding	Power	0.2KW	
		Speed	8m/min	
Interface	Button Control, touch screen, Card, and Manual operation			
Control	PLC			
Power	380V、50Hz 、 3 Phase			
Average collecting time	≤90 second			

SPECIAL PARKING SYSTEMS



Automatic parking system 4 floors + 1 basement



Car loaded	(mm)	4700×1800×1450	5000×1850×1550	5300×1900×2050
	wieght (Kg)	≤1700	≤2000	≤2350
Measurement	A (mm)	2500	2600	2700
	D (mm)	6000	6200	6400
	C (mm)	5650	5850	6050
	J (mm)	5050	5250	5450
	K (mm)	5300	5500	5700
	L (mm)	2250	2350	2450
	M (mm)	6930	7230	7530
	E (mm)	2500		
	B (mm)	N×A+350		
	G (mm)	6100=2500+1800*2		
F (mm)	4300=2500+1800			
H (mm)	≥7800			
I (mm)	2200			
Actuating Type		Hydraulic / Motor		
Motor	Lifting	Power	11kw	3.7kw
		Speed	15-18m/min	6m/min
	Sliding	Power	0.2KW	
		Speed	8m/min	
Interface	Button Control, touch screen, Card, and Manual operation			
Control	PLC			
Power	380V、50Hz 、 3 Phase			
Average collecting time	≤90 second			