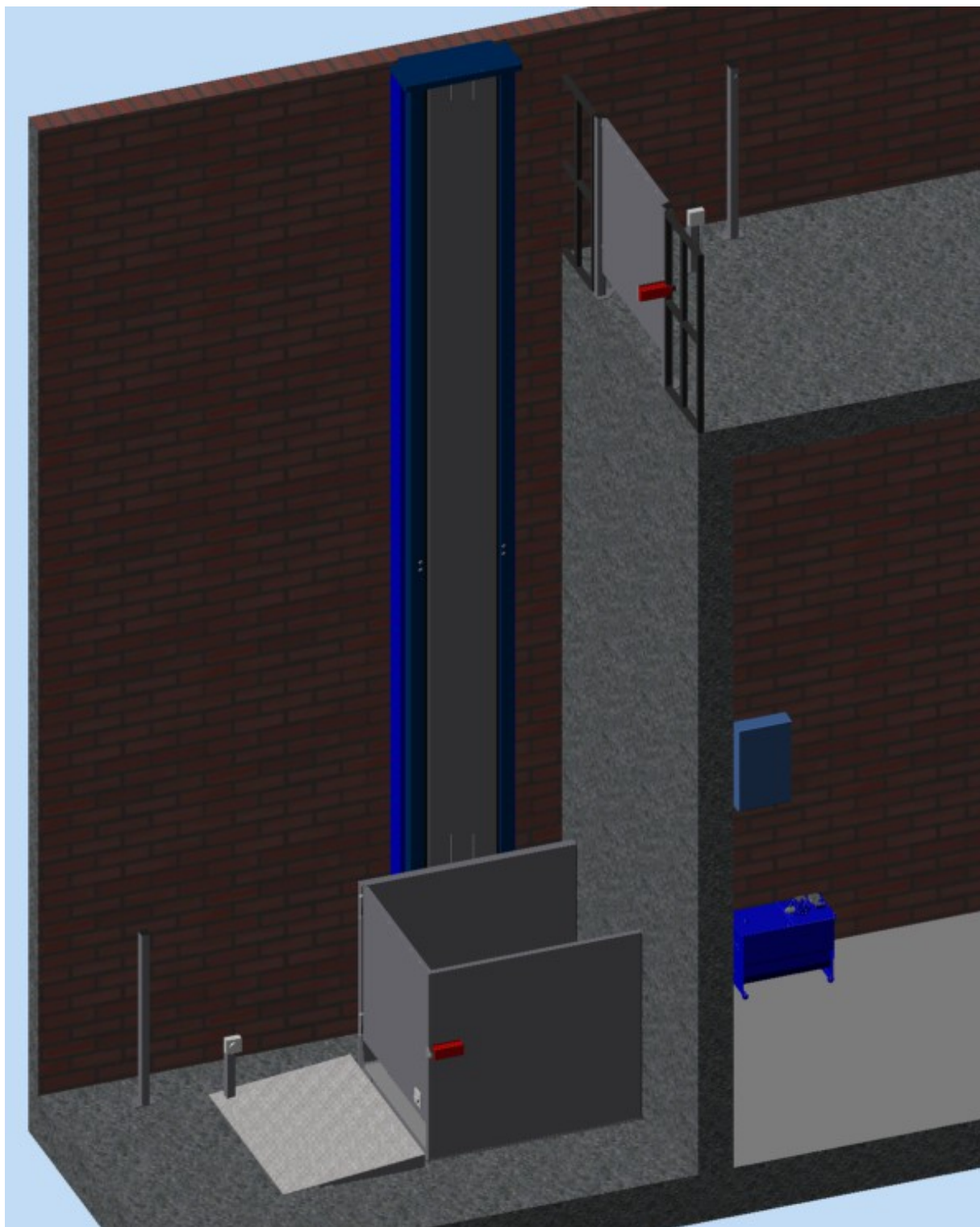


INSTRUCTIONS INSTALLATIONS VERTIPLAT

HYDRAULIC VERTICAL LIFTING SYSTEM FOR DISABLED (According to machinery directive 98/37/EC)



CONTENTS

	Page
1. GENERAL INFORMATION	
1.1 Use of range	4
1.2 Information about the product	4
1.2.1 Purpose of this document	4
1.2.2 Manufacturer company	4
1.2.3 Annotations	4
1.2.4 Document terms	4
2. TRANSPORTATION AND TEMPORARY STORAGE	
2.1 Precaution	5
2.2 Transportation	5
2.3 Unpacking of components	5
2.4 Temporary storage	5
2.5 Additional precaution	5
2.6 Protection from environmental conditions	5
3. GENERAL DESCRIPTION	6
4. DIRECTIVE OF INSTALLATION	
4.1 Guide column installation	7
4.2 Ram installation – Pulley – Chains.	8
4.3 Platform installation in the chassis	9
4.4 Tank installation – Hydraulic hose	10
4.5 Landing door installation	11
4.6 Rump installation	12
4.7 Safety edges installation	12
4.8 Magnets installation	13
4.9 LOP installation	14
4.10 Side covers installation	14
4.11 Front cover installation	15
4.12 Upper cover installation	16
5. ANNEX	17
5.1 Hinge adjustment	17
5.2 Front cover assembly	18

GENERAL INFORMATION

Range of application

Vertical lifting systems for disabled are according to machinery directive 98 / 37 / EC .

1.2 Information concerning the product

1.2.1 Scope of supply

The scope of supply is part of the complete lifting systems documentation and is recommended to the installer

1.2.2 Manufacturer

The manufacturer company is:

KLEEMANN HELLAS

Head office : Kilkis industrial area

Address : P. O.25 T.K.61 100 Kilkis

1.2.3 Annotations



DANGER: this symbol indicates your attention for highly possibility for person injures. The instructions that are marked with this symbol must strictly followed.



WARNING: this symbol suggest your attention to information hat if are not take into consideration it may cause injury or extended product damage.



ATTENTION: this symbol suggest your attention to important directives of use. Neglecting of this instructions, it may lead to product damage



Important Notice

1.2.4 Terms

Not allowed the reproduction of this document without the permission of KLEEMANN

TRANSPORTATION AND TEMPORARY STORAGE

2.1 Precaution

All the large and heavy components should be lifted to their position by means of a lifting mechanism . During lifting the components must be balanced. Additionally the lifting mechanism's capacity should be sufficient for the task

2.2 Transportation

Try to avoid damages during the transportation. Secure components from accidental falling. All packed parts should be carefully transported and all packing notes warnings should be strictly respected


2.3 Unpacking of components

Thoroughly check the consignment for any possible damages or missing parts right after the reception. Notify the manufacturer immediately in written for any problems regarding the consignment. Complaints that are notified to the manufacturer long after the reception of the consignment will not be accepted. Remove all packing material prior to installation

2.4 Temporary storage

The components should be protected by the humidity. All components should be regularly checked for the possible existence of condensed water that could cause damages to the product

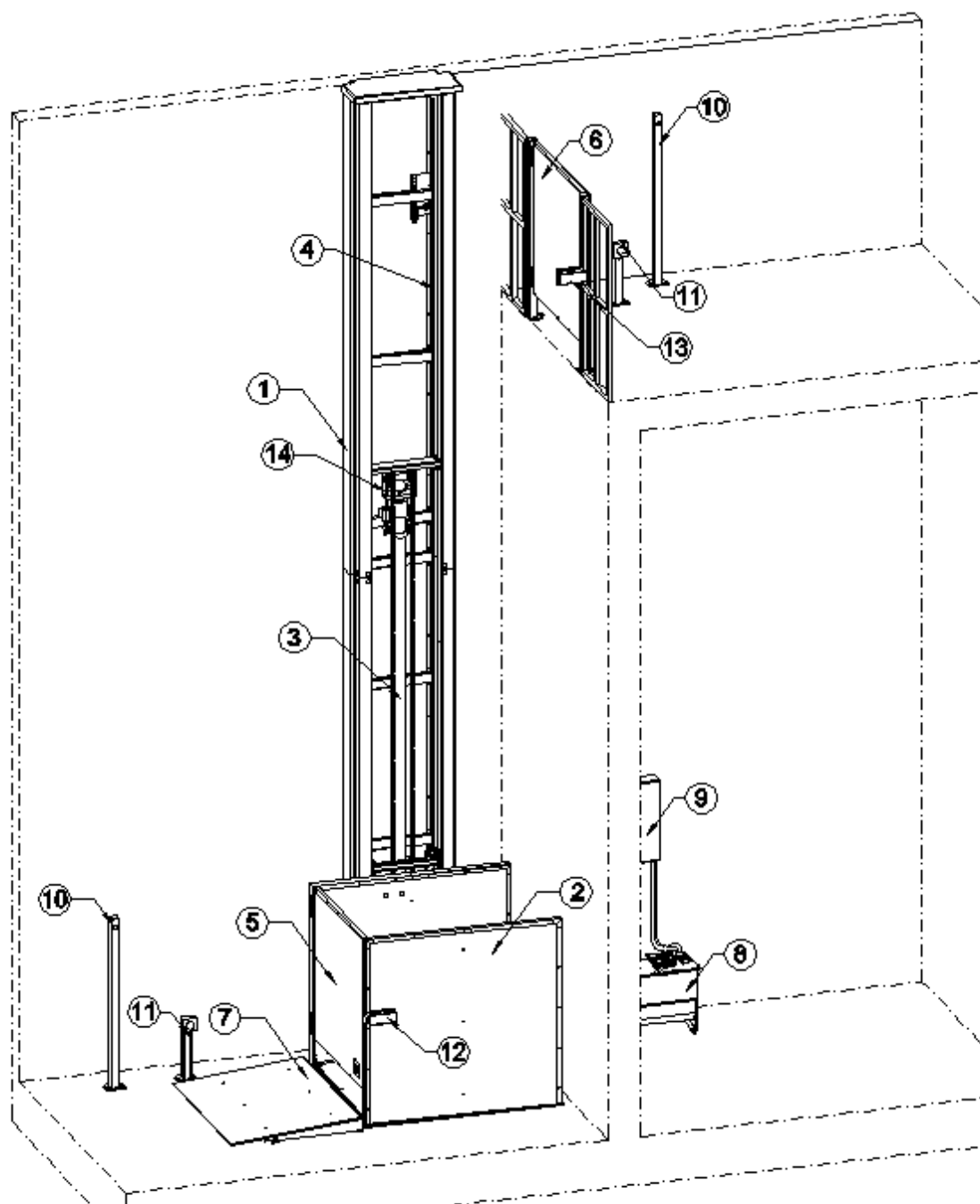
2.5 Additional precaution

 If components are to remain stored longer than predicted the client should perform regular checks of the effectiveness of precautions. Kleemann will be responsible for the failure of the proper storage

2.6 Protection from environmental conditions

The storage area should be dry and free from dust. Protection against time can only be achieved through proper packaging and storage

1. GENERAL DESCRIPTION



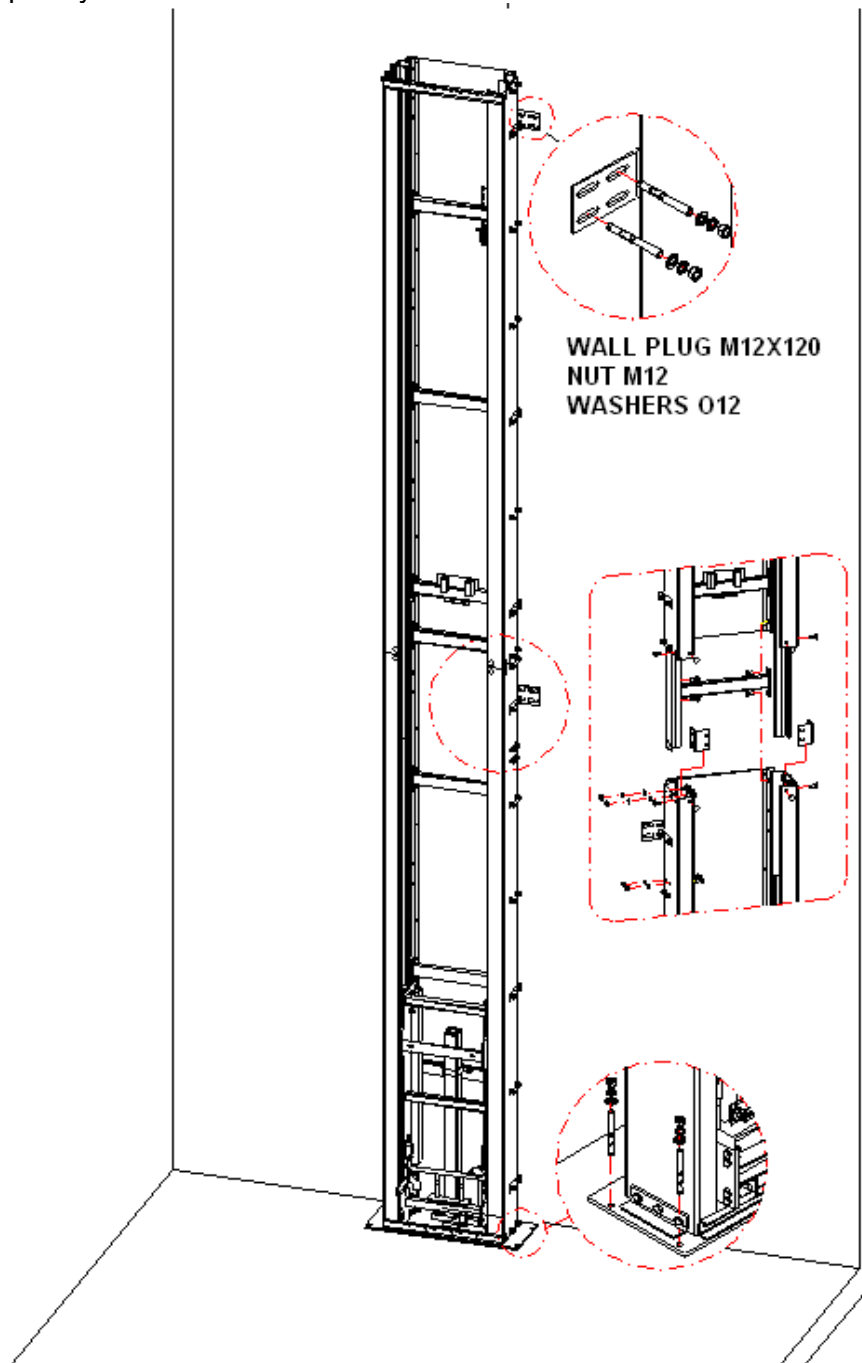
- 1. GUIDE COLUMN
- 2. PLATFORM
- 3. RAM
- 4. GUIDE RAIL
- 5. PLATFORM DOOR
- 6. LANDING DOOR
- 7. PLATFORM RUMB

- 8. TANK T50
- 9. CONTROLLER
- 10. LOP
- 11. ELECTROMAGNETS
- 12. PLATFORM LOCK
- 13. DOOR LOCK
- 14. PULLEY

4. INSTALLATION INSTRUCTIONS

4.1 Guide column installation

- Place the cover at the back side of the frame with self drilling screws
- Place the column inside the shaft according to the installation drawing and support it at the ground with screws M12x120mm. (The bolts at the base of the column are fixed at the end in order to be possible to make small adjustment of the column)
- First we place the first part of the guide column and then the second with the help of special flange according to the following drawing. The union of the 2 parts must be completely flat



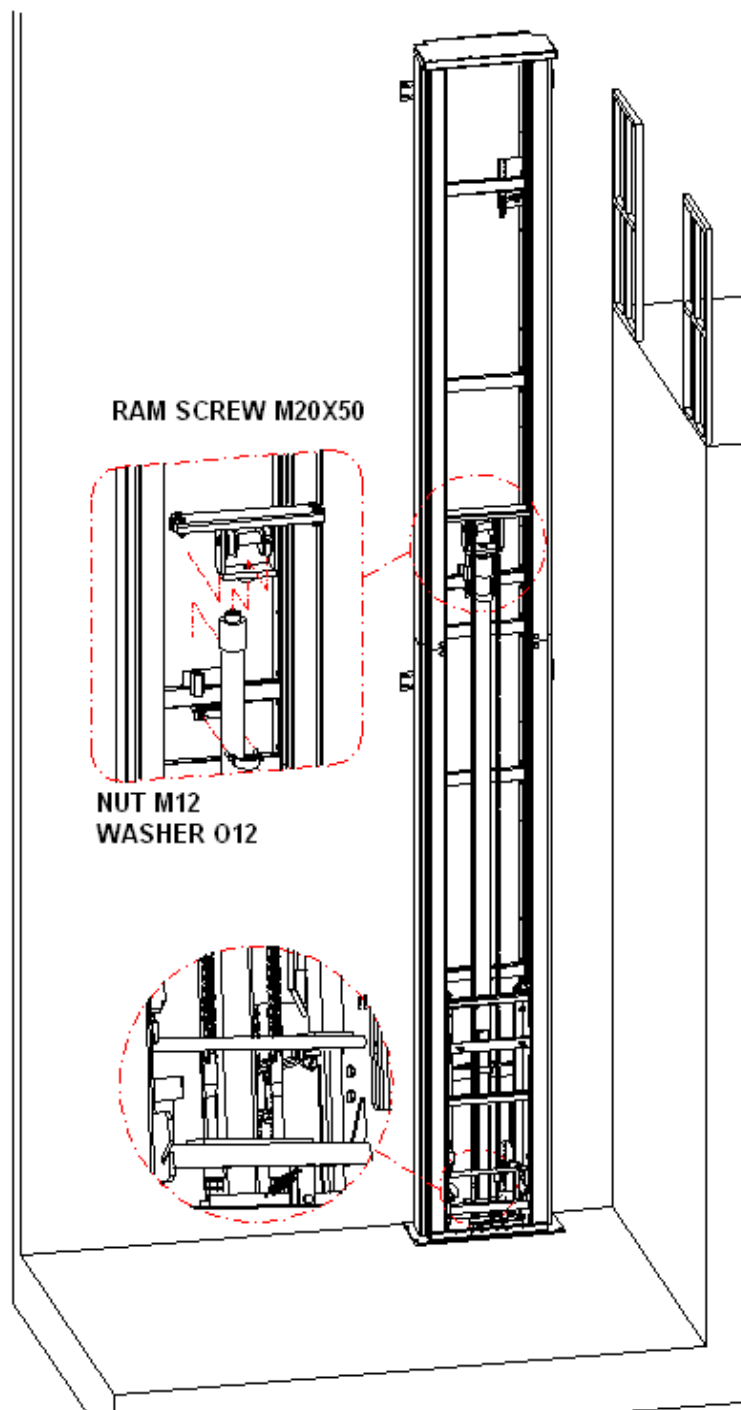
Notify: In case of a not standard shaft the support of the column can be done by special supports provided by Kleemann

4.2 Installation of Piston / Pulley / Chains.

Place the piston on the support beam. The piston must be completed vertical. Check its position with a spirit level

Place the pulley between the guides with the special shoes and support the pulley on the piston with a screw M20X50.

Place the chains and connect them with the chain wedge socket as shown in the following drawing (WHEN THE PLATFORM IS HANGING BY THE CHAINS REMOVE THE SAFETY WIRE THAT HOLDS THE THE SAFETY GEAR PLATE.)

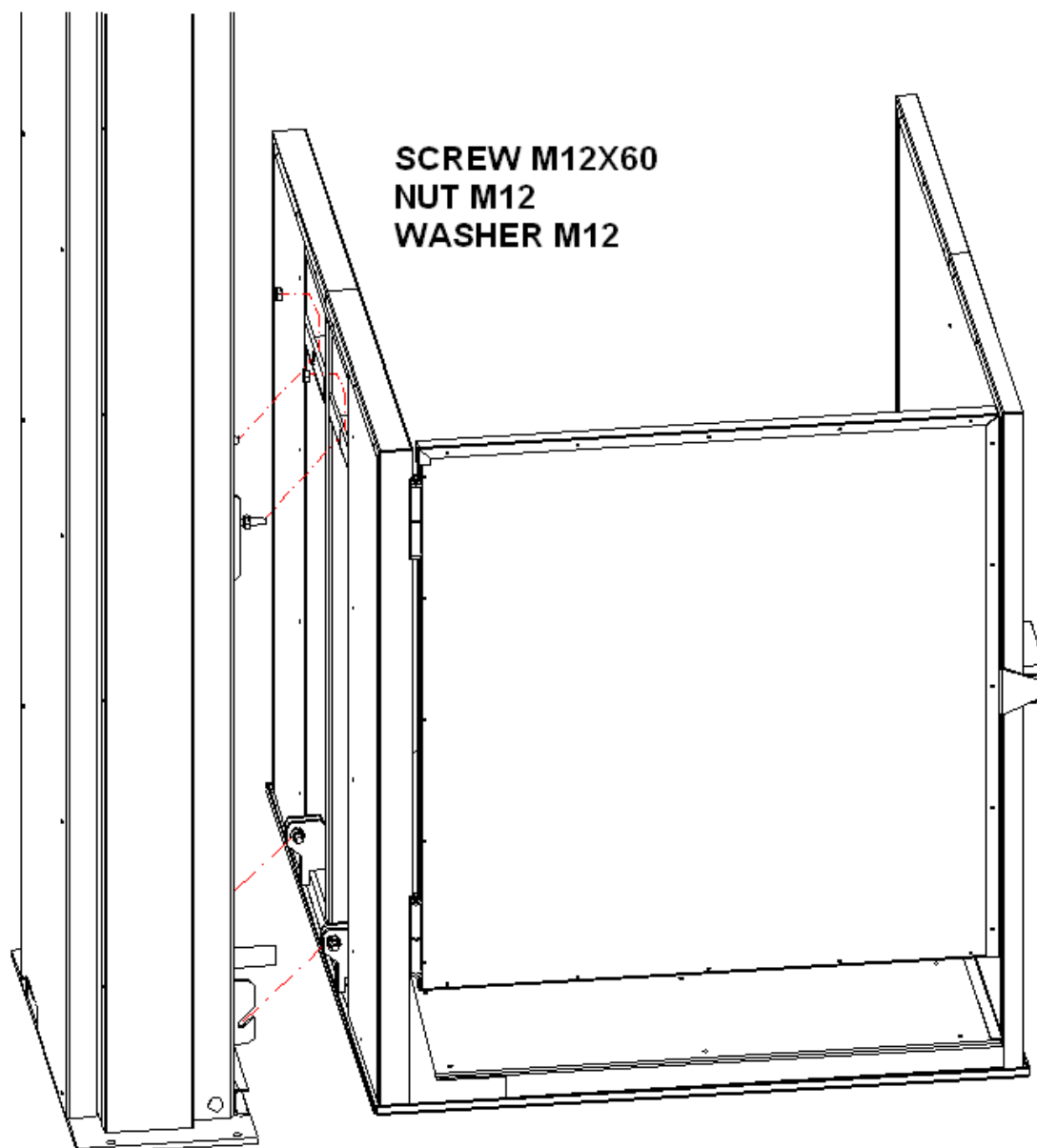


When you have finished the installation of the column you must place the flat twelve wire which is tight by one end in the chassis

install the wire in one connecting beam near the middle of the travel, at the left side of the column (approximately 5-6 cm from the left side), be aware that when the platform is on the upper or lower stop the wire is not stretched and during operation doesn't come in contact with parts or screws that can damage it.



4.3 Place the platform on the chasis according to the following drawing and fix it with screws M12x120mm



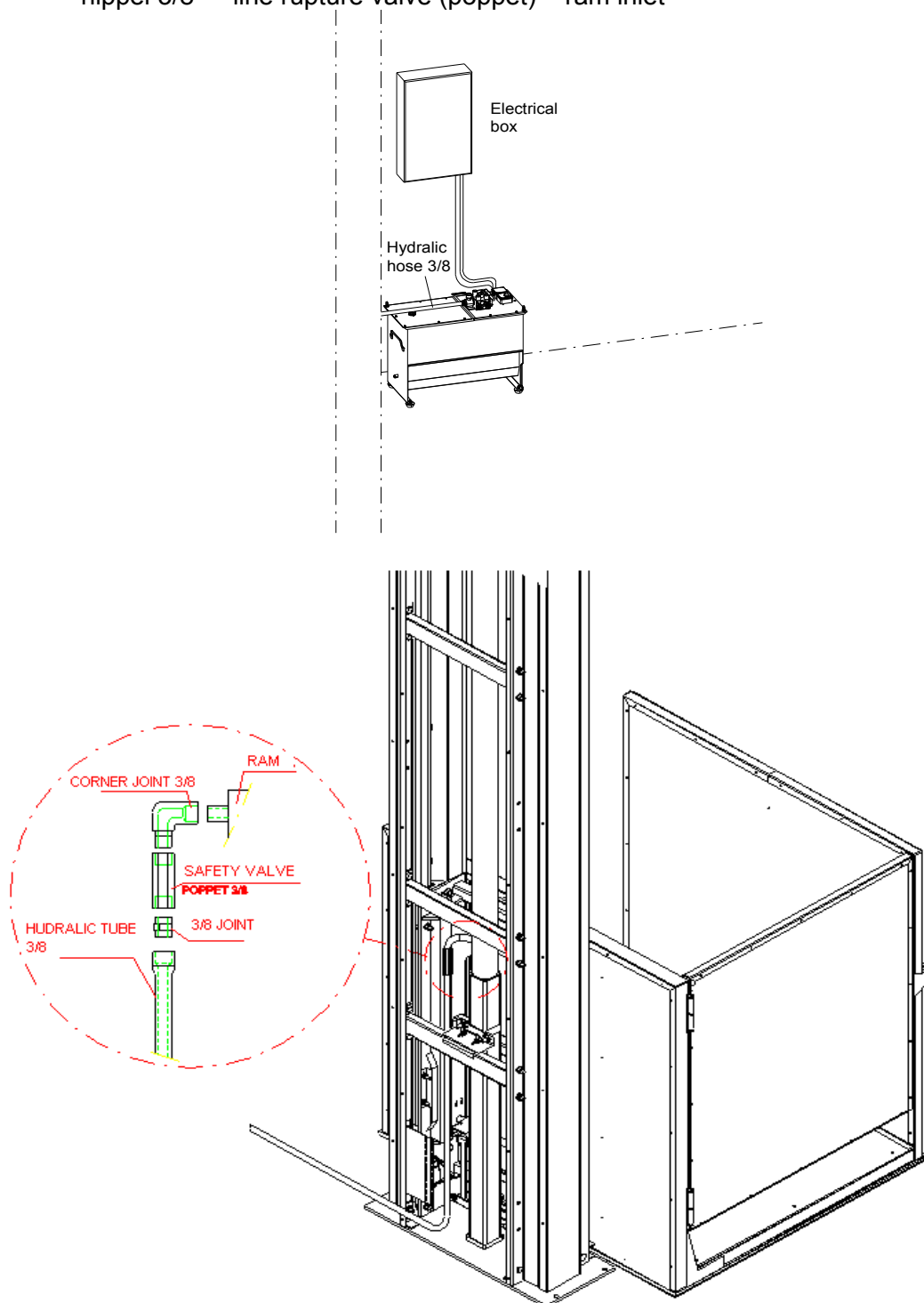
Notify: In the same point there is the union of platform's electrical parts. Do not forget to connect them.



Attention: Except from the traveling cable you must also connect the cable in the safety gear switch (2X0,75)

4.4 Hydraulic hose installation

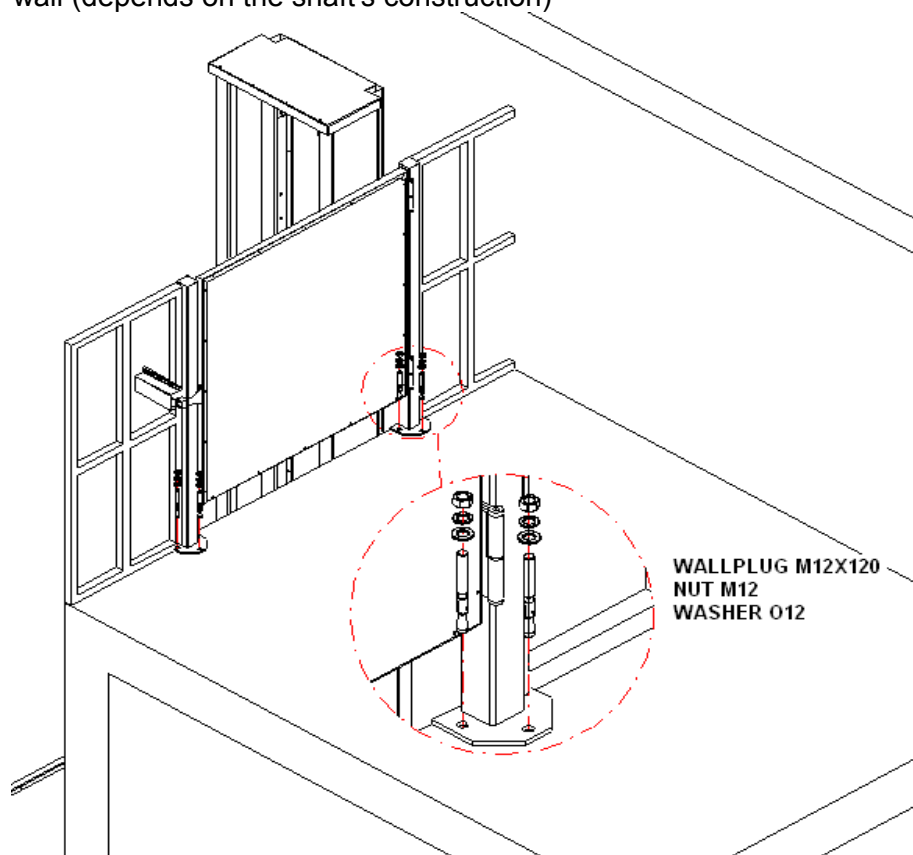
- Place the tank and the controller in the machine room. Also on the tank there is a pressure switch that controls the platform's overweight.
- Connect the tank with the hydraulic hose 3/8". The other side of the hydraulic hose is already connected to the ram. The connection is the following: Hydraulic hose – nipple 3/8" – line rupture valve (poppet) – ram inlet



WARNING: THE SAFETY VALVE CONNECTS TO THE PISTON FROM THE ALLEN SCREW SIDE, THE SIDE WITH THE HOLES GOES TO THE SIDE OF THE PISTON T.

4.5 Landing door installation.

- Pay attention to the right distance of the door from the wall (according the installation drawing) so that the landing door will not prevent the exit the platform
- Place the door posts in the floor by using anchors M12X120.
- The upper part of the door posts must be connected with the existing railing or the wall (depends on the shaft's construction)



Attention 1: Check that the door close on its own with the help of the hinges with return springs and that the door lock is activated when the door close .
If the door can not close on its own adjust the return spring (see paragraph 5.1)

Attention 2: The lock comes with its safety switch in off position so the key dosen't lock. This happens so it can make easier the installation of the door.

When the installation is over unscrew the metal cover of the lock and turn the switch to safe position (picture 2) and tight the position screw.



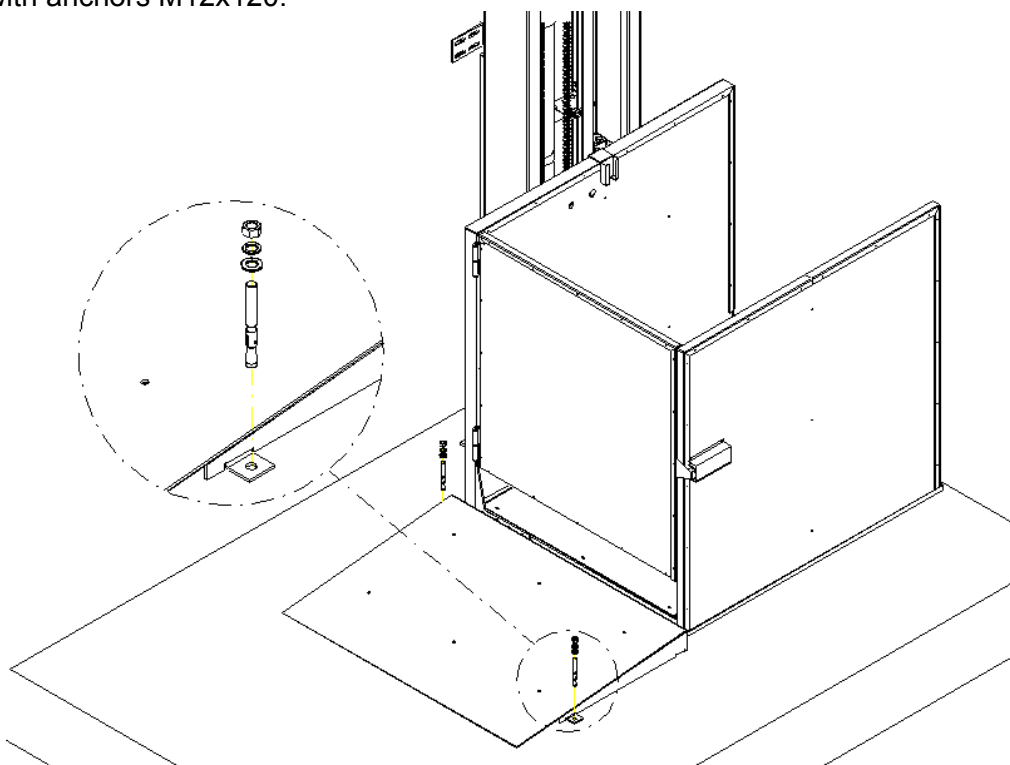
OFF POSITION



OPERATION POSITION

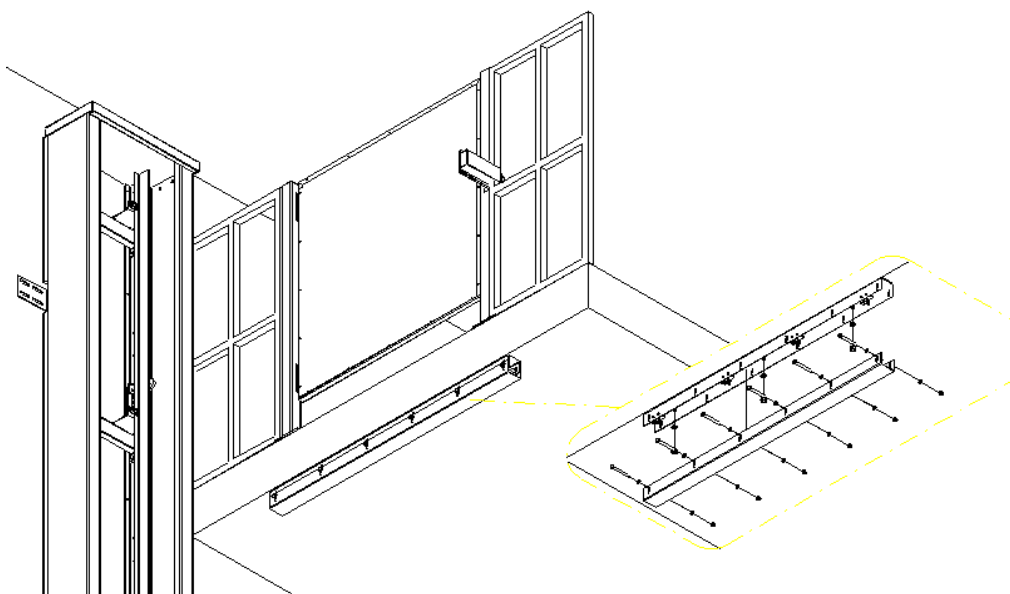
4.6 Rump installation

Place the rump at a distance of 30-40mm in front of the platform's door and secured it with anchors M12x120.



4.7 Safety contact installation.

To avoid accidents when the platform go through to the upper stop place the safety contact as shown in the following picture

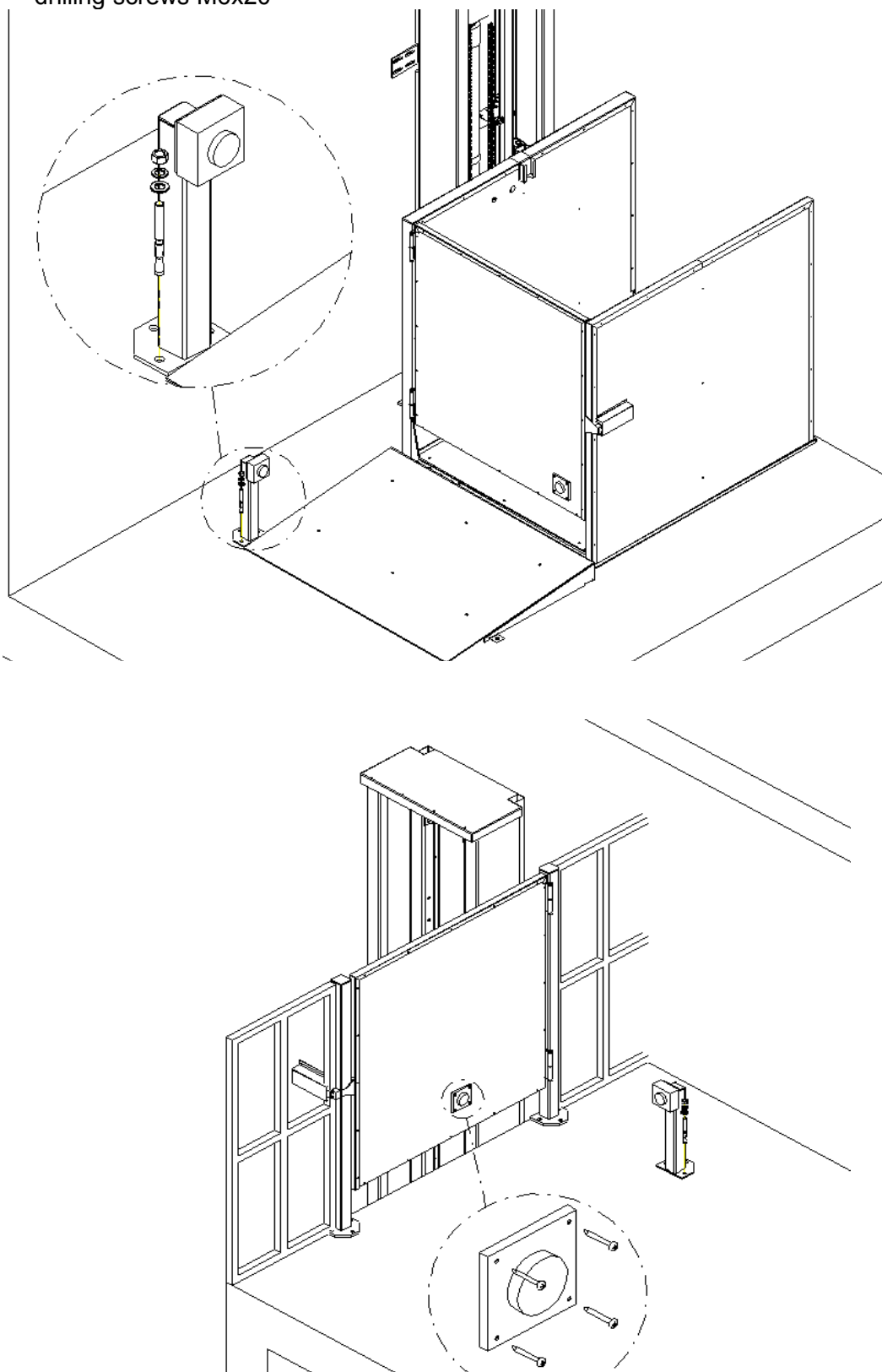


Attention: the safety contacts are not supplied only it is necessary

4.8 Magnets installation

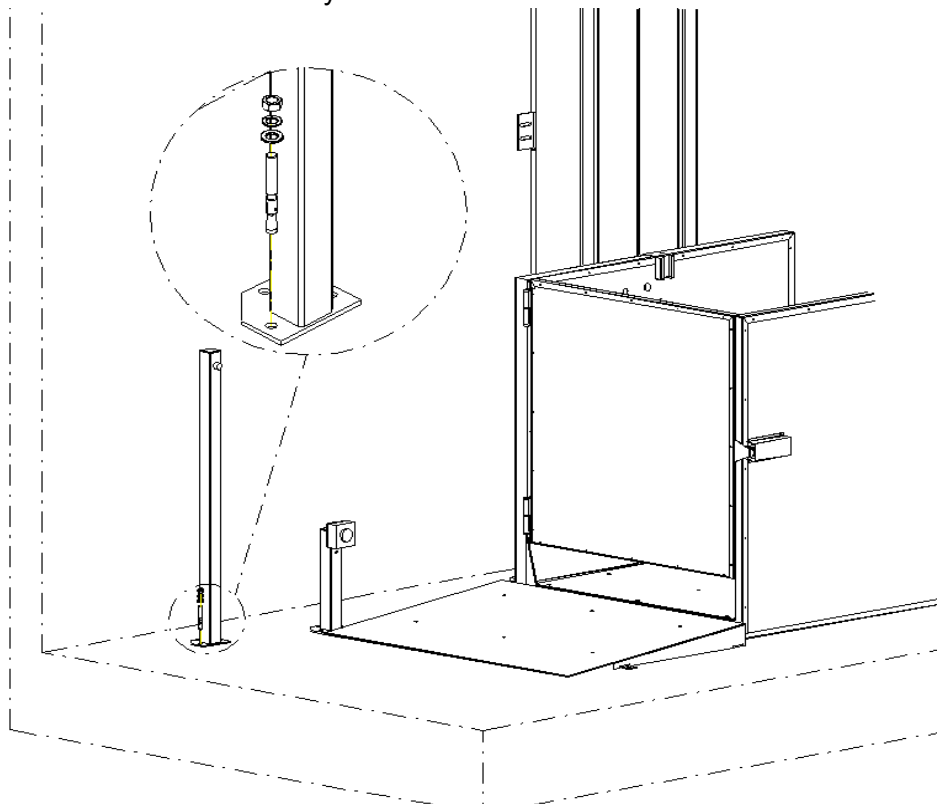
Measure the door opening at every stop and mark the height where the magnet will be placed in each door.

The magnets bases are mounted with anchors M12x120 and the plates with self drilling screws M6x20



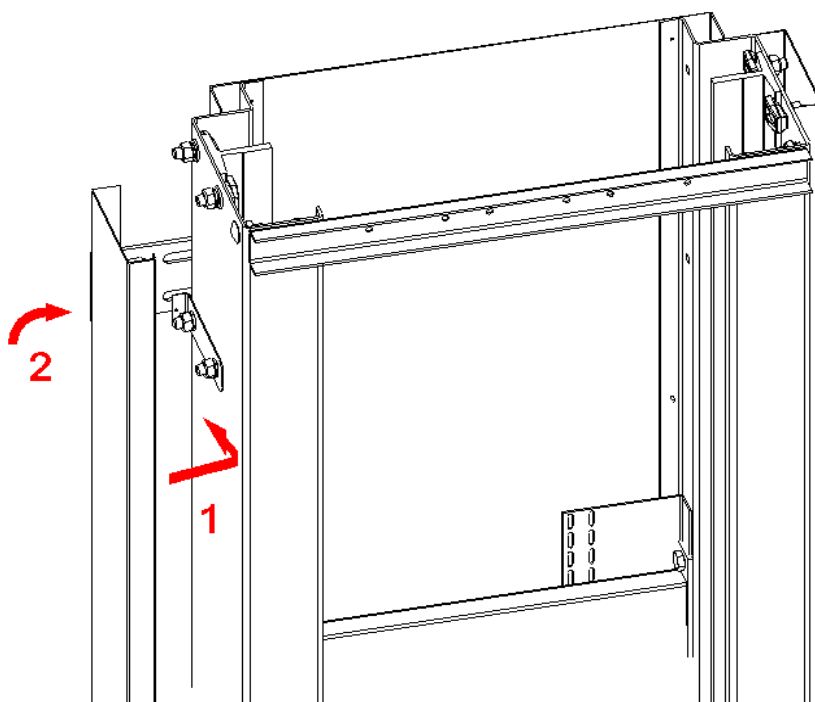
4.9 LOP installation

Place the LOP at the ground using anchors M12x20. The distance of the LOP from the platform must be determined by the user



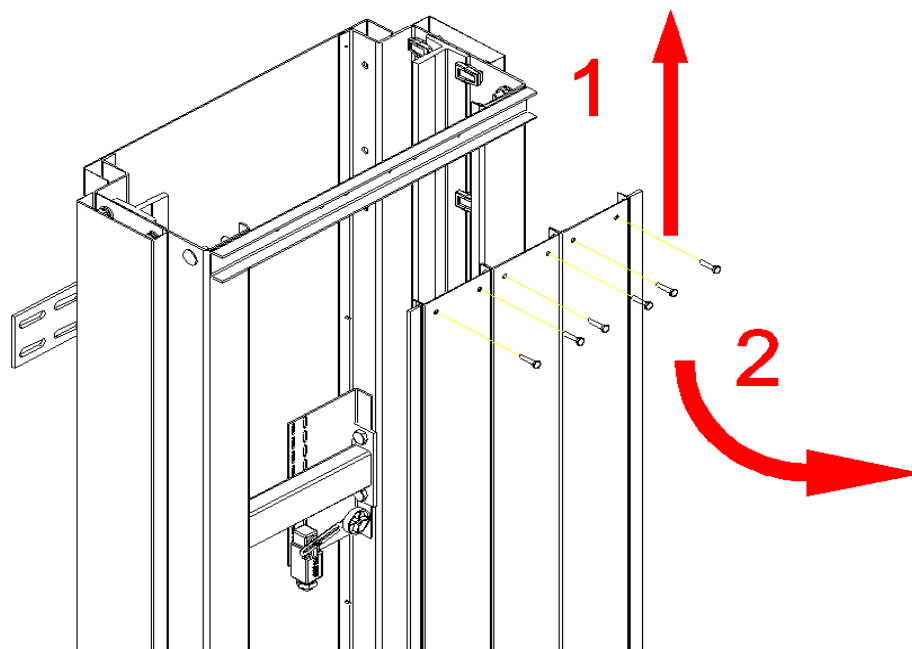
4.10 Side covers installation

Place the side covers according to the following picture and secured them by using hexagon screws M6 x 15



4.11 Place the front cover.

Place the front cover according to the following drawing and secured it to with hexagon screw M6X20. During the movement of the platform the chassis must not touch the cover



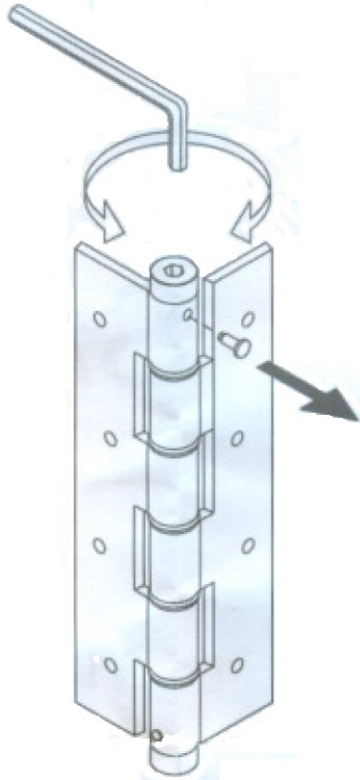
Before you place the cover you have to check the position of the stop switches so that the platform will stop the right position.

4.12 Install the upper cover by using self drilling screws M4X15

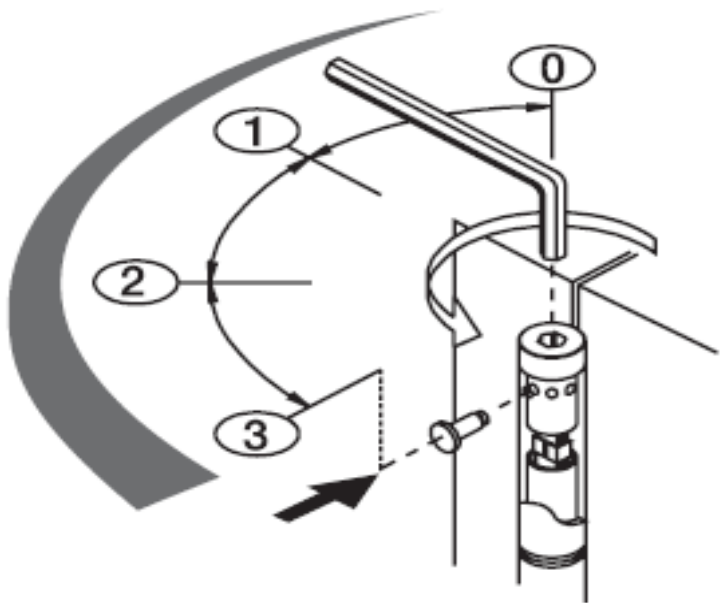
ANNEX

5.1 Hinge settings.

- By using an Allen key 5mm remove the axis from the upper part of the hinge (picture a)
- Rotate the head and this way you adjust the door closing force. Indicative position is number 2 (picture b)
- Place again the axis in the door position (attention: not using hammer)



(Picture a)

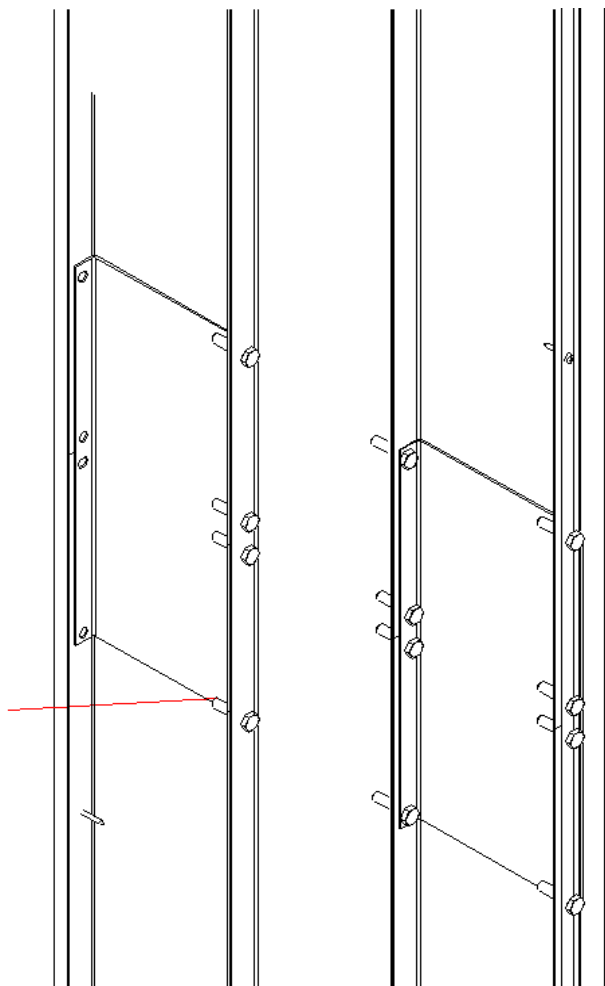


(Picture b)

5.2 Front cover assembly when it consists of more than one piece

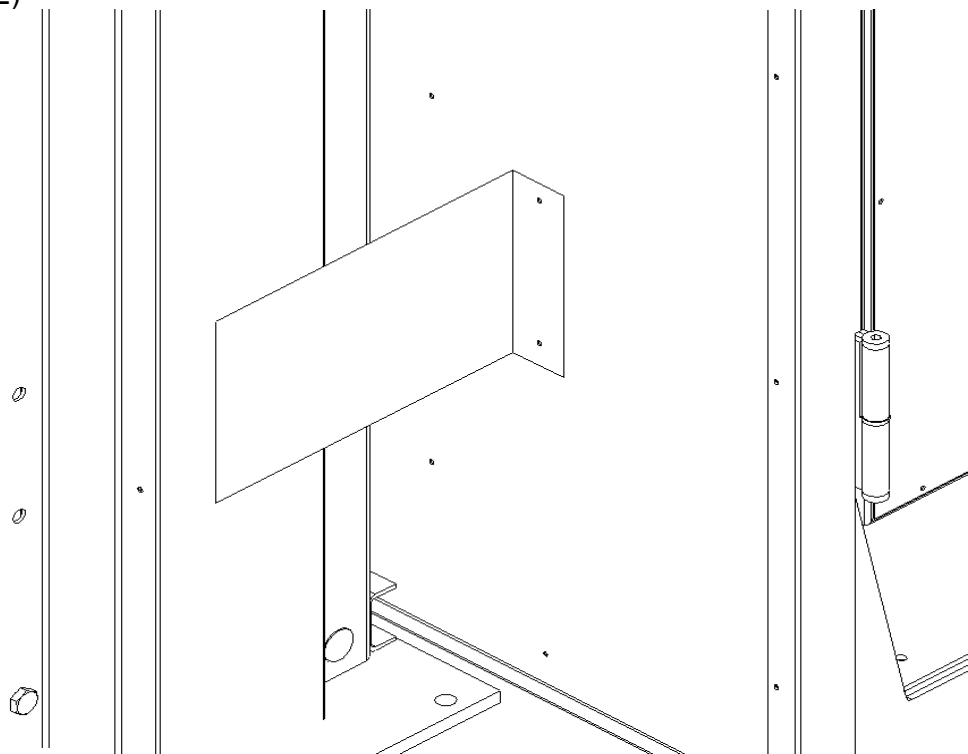
Assembly the components of the front cover according to the orders drawing. Connect the covers by using connecting sheet metal and hexagon screws M6X20 for the internal side and Allen for the external

SCREW M6X20
NUT M6
WASHER O6

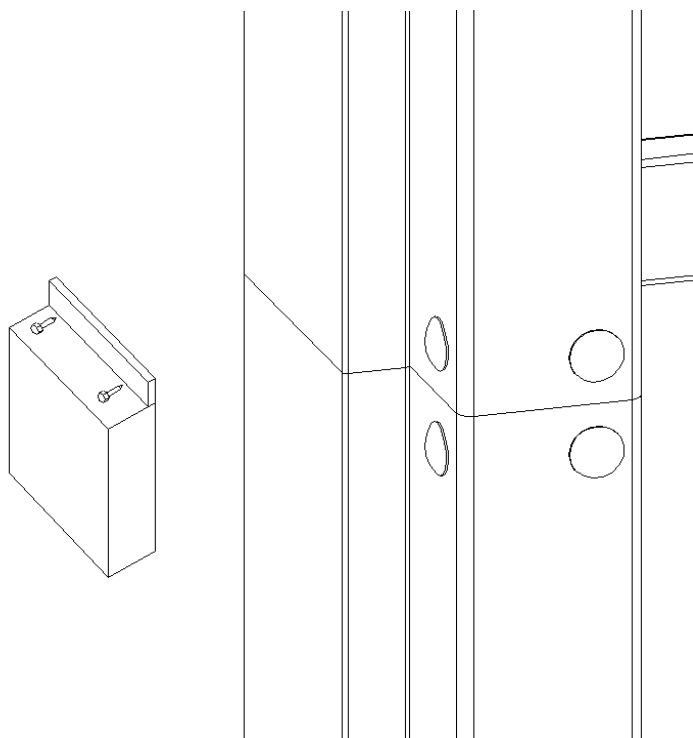


INSTALLATION OF THE MIDDLE STOP

- Screw the base of the magnets at the back of the platform approximately 55mm from the side of the column using self drilling screws. (picture 1)
- Place the magnetic screw at the side of the column in the dissired height accornid to the stop (picture 2)



Picture 1



Picture 2

Installation of front cover for large height columns

Connect the pieces of the front cover accordingly to the following picture. Make sure that the rollers are between the guides of the front covers.

After you finish installation and test the movement of the platform secure the sheet metal covers using self drilling screws M3,6X10.

