



**MARINE SOLUTIONS**



**KLEEMANN™**  
Your 1<sup>st</sup> Choice in Lifts



FERRIES

CARGO SHIPS

CRUISE SHIPS

LUXURY YACHTS

OFFSHORE



KLEEMANN Testing Tower, Greece

KLEEMANN is one of the major lift manufacturers in the European and global market. Carrying a long experience in the lift industry, KLEEMANN is proud of its strong global brand name, strongly linked with the high quality standards and the flexible specialised solutions for which the company is renowned.





Nobu Restaurant, Qatar

2 traction lifts serving the public and 1 hydraulic serving the staff



Kremlin, Russia

2 hydraulic freight lifts of 17tn load

With company-owned manufacturing facilities in Greece, Serbia and China, assembly lines in Turkey and Russia and local presence in 15 countries, KLEEMANN caters to the needs of every market through constant use of state-of-the art mechanical equipment built according to its high safety standards.

KLEEMANN exports to more than 100 countries worldwide, among them being the United Kingdom, Germany, Ireland, Belgium, the Netherlands, Russia, New Zealand, Romania, Turkey, Australia & Cyprus. Following successful strategies and careful investments, the company remains one of the financially healthiest companies in Europe.

Guided by consistency, flexibility, fast service, innovation and development, the company remains one of the key global market players in lift manufacturing and the first choice when it comes to customised projects with special specifications.

The industry's preference for KLEEMANN is closely interrelated with the credibility of the KLEEMANN brand, the special innovative design and the flexible and prompt service, as well as the importance given to continuous development.



Mary Rose Museum, UK

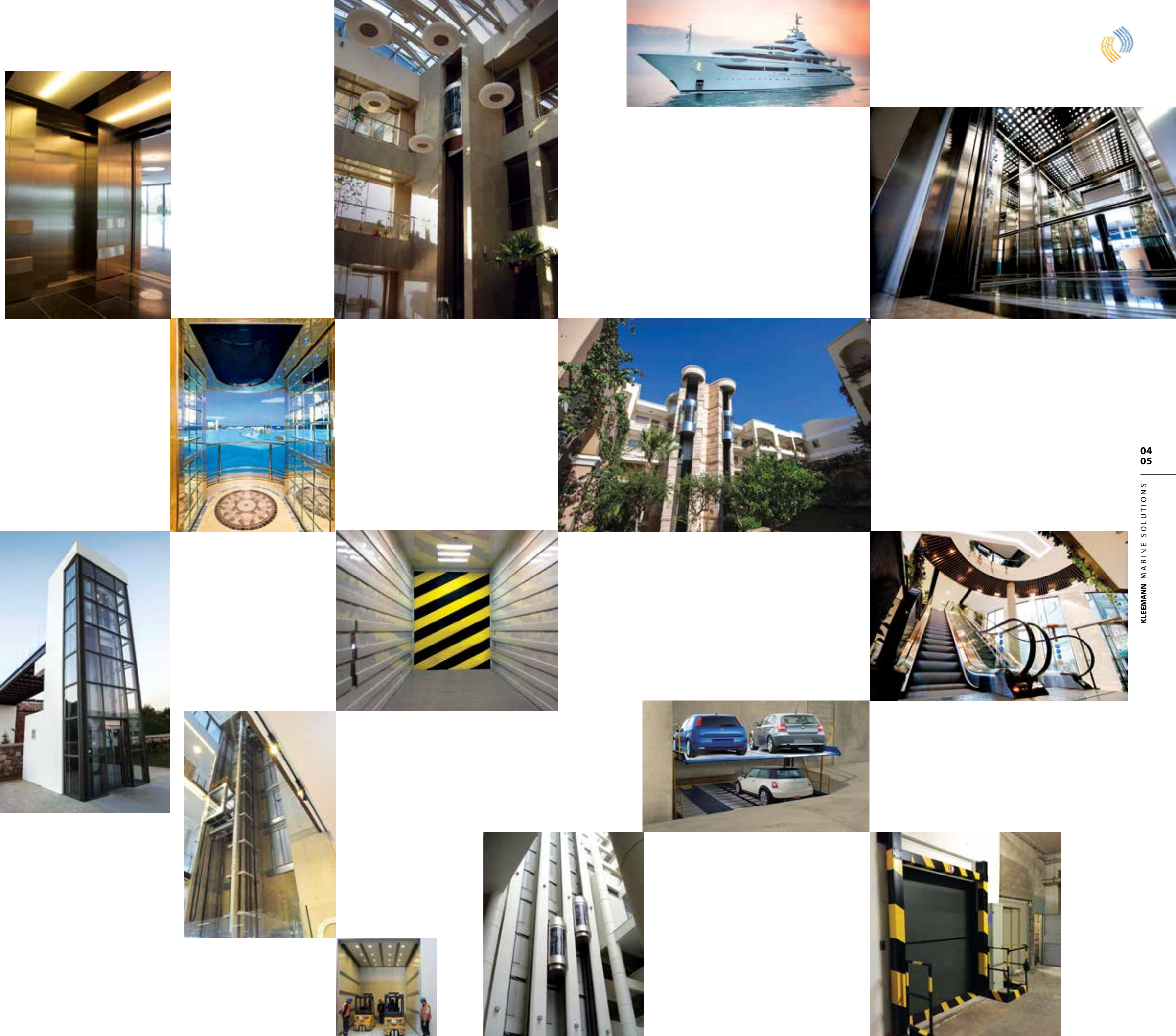
2 traction lifts with custom-made panoramic cabin



With cutting-edge technology and engineers of a high scientific level, KLEEMANN has been developing new products and introducing specialised solutions. Guided by safety and quality standards and by its commitment to constant growth and innovation, the company offers:

- Passenger lifts
- Freight lifts
- Escalators and Moving walks
- Parking Systems
- Modernisation Solutions
- Marine Solutions

The R & D department mainly focuses on searching for new technologies and market trends in order to improve its products and achieve flexible design and constant evolution of the parts included in a lift. Each new product is tested in real conditions, enabling our engineers to substantiate and perfect it, prior to its accession to full production.





Within the context of its excellence policy, KLEEMANN sets a high value on quality and reliability and therefore commits itself to designing, manufacturing and offering its customers certified superior quality products and services.

The implemented Quality Assurance System meets all safety and quality requirements. KLEEMANN applies the following standards:

- EN ISO 9001: 2008 [Quality Management System]
- OHSAS 18001: 2007 [Occupational Health and Safety Management System]
- EN ISO 14001: 2004 [Environmental Management System]
- EN ISO 14006: 2011 [Eco Product Design]



KLEEMANN Marine solutions comply with IACS classification societies:







KLEEMANN elevators for passenger and cargo vessels are designed according to international standards and meet the requirements of the high demanding sea environment.

### **Advantages**

#### **Outstanding ride quality**

KLEEMANN Products were designed to deliver premium quality and passenger comfort. Featuring low levels of sound and vibration, they fulfil even the most demanding specifications.

#### **Safety**

Feel safe and secure with the guarantee of complete passenger safety.

#### **Ease of installation**

Designed for ease of installation and use, reliability and spatial efficiency.

#### **Eco-friendly**

Regeneration systems are available to provide exceptional ride quality whilst reducing energy by up to 60%.

#### **Design**

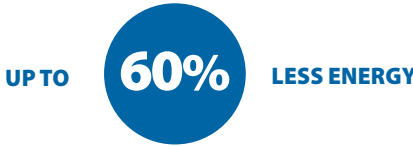
Unique tailor-made design options are customised according to your specific needs and the aesthetics of your space and building.

#### **Fast delivery**

Place your order and enjoy express delivery.

# GREEN FEATURES

Green features provide excellent ride quality whilst reducing energy consumption by up to 60%.



## Regeneration Drive

The regeneration unit has been developed to recover excess energy from the lift when the empty car travels upwards or the fully loaded car travels downwards. The recovered energy is recycled during further operation of the lift. The regeneration unit produces clean energy without causing disruptions to the network.

## Stand By Mode

When the lift is not in use, the Stand By Mode saves energy for the electronic subsystems.

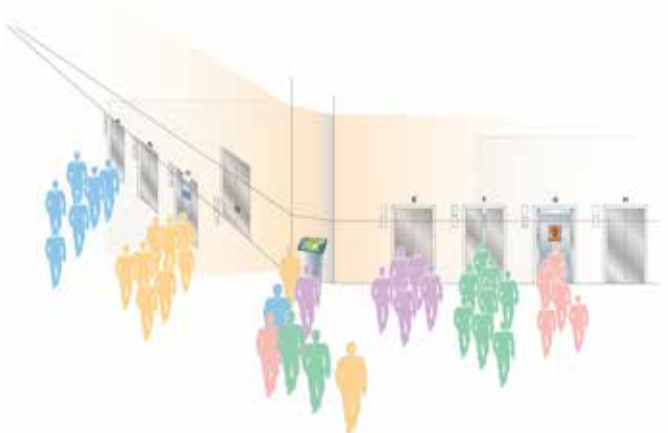


## Led Lighting

Led lighting reduces energy consumption and lasts 20 times longer compared to standard lighting.

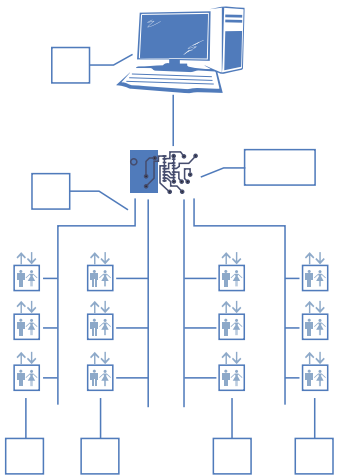
# DESTINATION CONTROL SYSTEM

The Destination Control System combines the features of energy saving and cost reduction with safety and passengers' comfort. It incorporates a variety of advanced sorting technologies, such as expert system, fuzzy logic and neural network, in order to ensure high efficiency and safety of the lift, which is based on CAN bus technology. The system guides passengers to the assigned lift, reducing the average waiting time and the long-time waiting rate, contributing to less crowded reception areas. The upgraded efficiency function can reduce the total number of lifts installed and its most effective selection process leads to fewer unnecessary stops, reducing the total energy consumption.



# REMOTE MONITORING SYSTEM

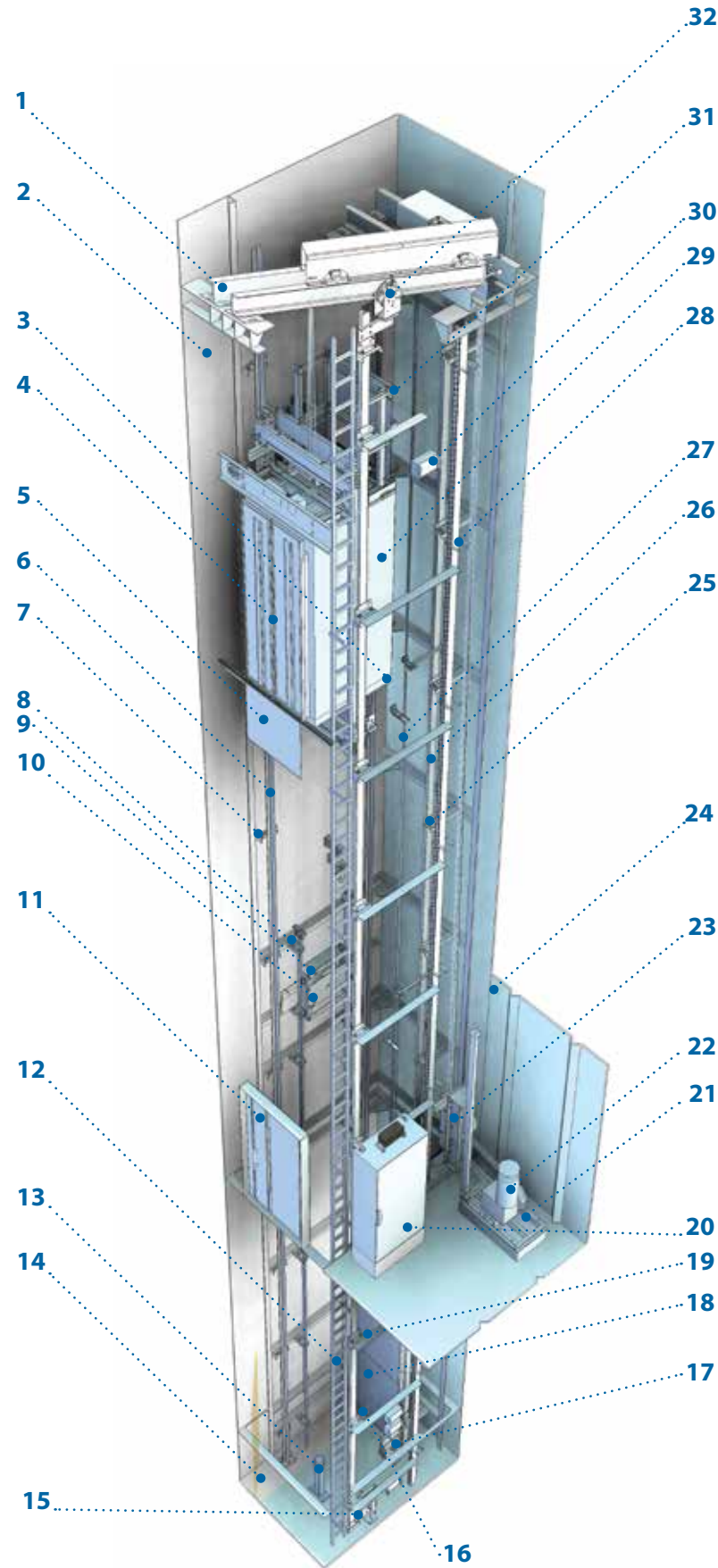
The Remote Monitoring System allows the management of lifts installed in one or several vessels, from a remote control room. The system is CAN Bus based and the connected lifts can be monitored through an intelligent and user friendly software installed on your PC. Features, such as real-time fault and operational mode recognition, intelligent fault recognition functions, the simultaneous monitoring of multiple lifts, the ability to control and adjust the lifts, the reports and analysis of the lifts performance make the system a versatile tool for managing vessels.



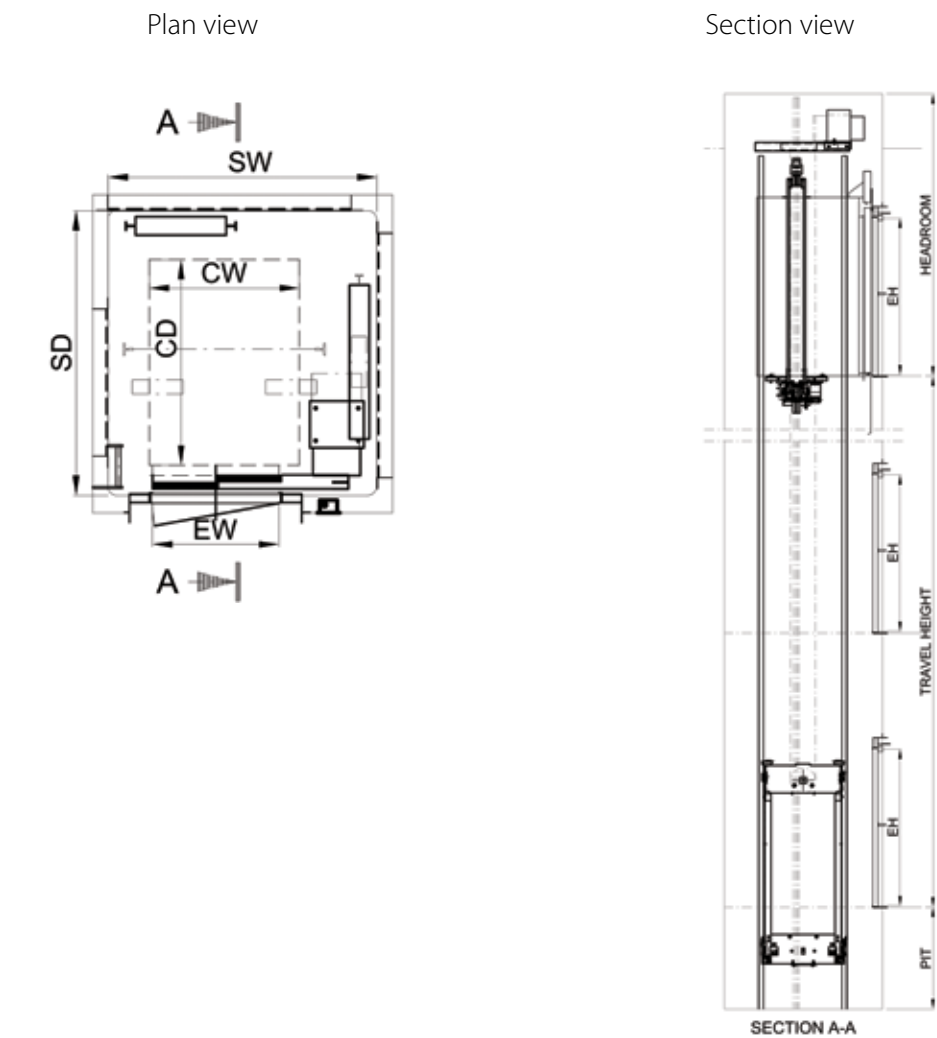


# Elevator Parts

- 1. Diverting Pulley Space
- 2. Elevator Trunk
- 3. Car Frame
- 4. Car Doors
- 5. Car Apron
- 6. Car Guide rails
- 7. Car Guide Rail Bracket
- 8. Travelling Cable Guide Rail Bracket
- 9. Travelling Cable Trolley
- 10. Travelling Cable Guide Rail
- 11. Landing Door
- 12. Trunk Ladder
- 13. Car Buffer
- 14. Pit
- 15. Car Tension Sheave
- 16. Counterweight Buffer
- 17. Counterweight Tension Sheave
- 18. Counterweight Protection Screen
- 19. Counterweight
- 20. Controller Cabinet
- 21. Machine Base
- 22. Traction machine
- 23. Diverting Pulleys
- 24. Machine Room
- 25. Counterweight Guide Rail Bracket
- 26. Counterweight Guide Rail
- 27. Wire Ropes
- 28. Metal Cable Trunk
- 29. Cabin
- 30. Cable Junction Box
- 31. Car Balustrade
- 32. Car Overspeed Governor



## MACHINE ROOMLESS SOLUTION (MRL)



### Standard Dimensions

Load Capacity (Persons)	Speed	Entrance Dimesions (mm)	Internal Car Dimensions (mm)	Trunk Dimensions (mm)	Pit Depth	Overhead Height
		EWxEH	CWxCD	SWxSD		
360 kg (4 persons)	1m/s	800x2000	950x1100	1700x1500	1450	3950
	1.6m/s				1550	4100
500 kg (6 persons)	1m/s	800x2000	950x1300	1700x1800	1350	3950
	1.6m/s				1450	4100
750 kg (10 persons)	1m/s	900x2000	1200x1500	1950x2000	1350	3950
	1.6m/s				1450	4100
1000 kg (14 persons)	1m/s	900x2000	1100x2100	1950x2600	1350	3950
	1.6m/s				1450	4100
1600 kg (22 persons)	1m/s	1300x2000	1500x2300	2350x2800	1350	3950
	1.6m/s				1450	4100
2000 kg (27 persons)	1m/s	1300x2000	1600x2500		1350	3950*
	1.6m/s				1450	4100*

**Notes:** 1. Trunk dimensions are the clear dimension except the deck cutting (opening), stiffener, insulation and etc.  
2. Please contact KLEEMANN for any other specifications

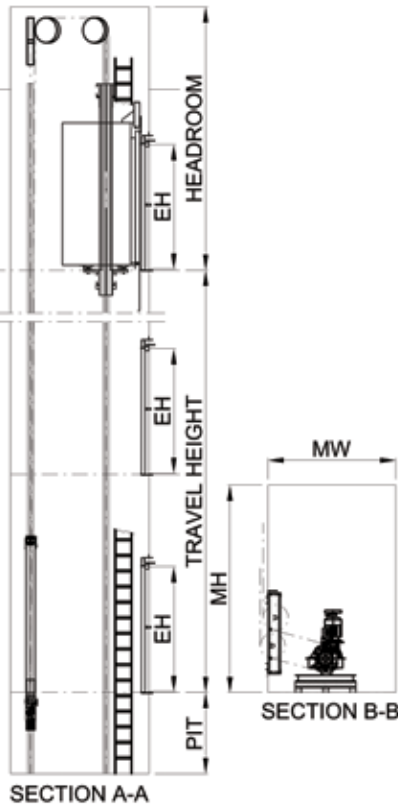


# MACHINE ROOM SOLUTIONS

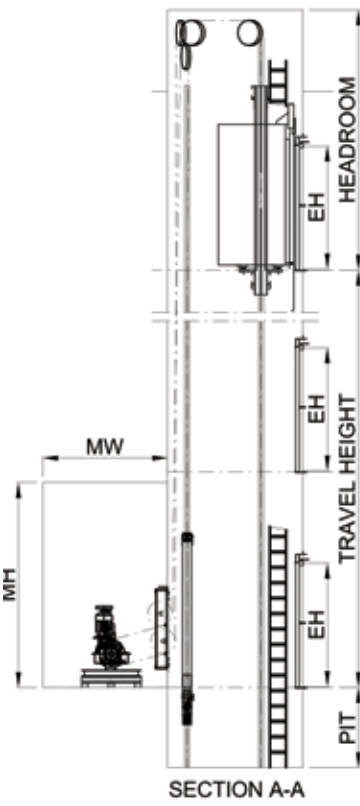
## Trunk and Machine Room Section View

### Machine Room Position:

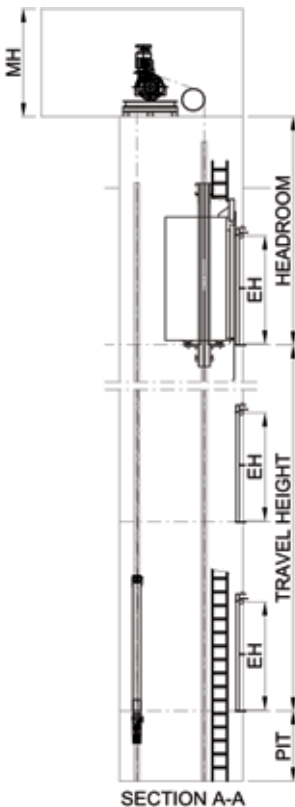
1. Beside the trunk



2. Behind the trunk



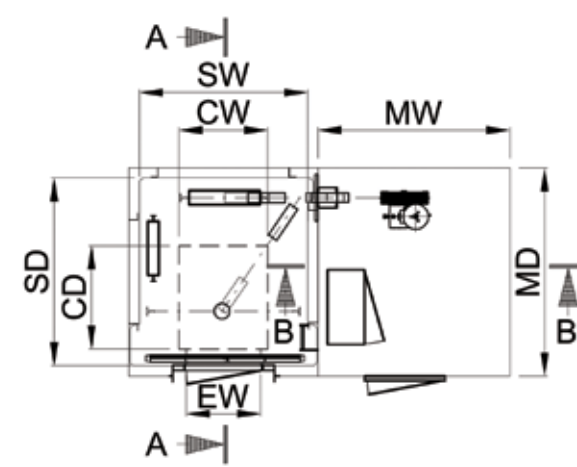
3. Above the trunk



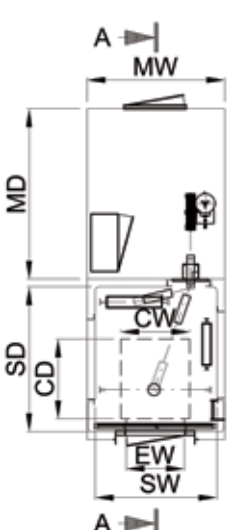
## Trunk and Machine Room Plan View

### Machine Room Position:

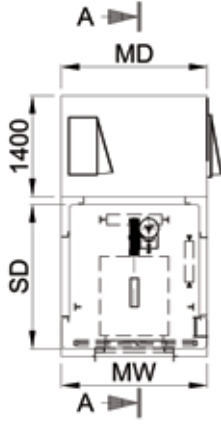
1. Beside the trunk



2. Behind the trunk



3. Above the trunk



## Standard Dimensions

Load Capacity (Persons)	Speed	Entrance Dimensions (mm)	Internal Car Dimensions (mm)	Trunk Dimensions (mm)	Pit Depth	Overhead Height Final	
		EWxEH	CWxCD	SWxSD		Basement	Overhead
360 kg (4 persons)	1m/s	800x2000	950x1100	1800x1800	1400	4600	3950
	1.6m/s				1500	4750	4100
500 kg (6 persons)	1m/s	800x2000	950x1300	1800x2000	1400	4600	3950
	1.6m/s				1500	4750	4100
750 kg (10 persons)	1m/s	900x2000	1200x1500	2000x2200	1400	4600	3950
	1.6m/s				1500	4750	4100
1000 kg (14 persons)	1m/s	900x2000	1100x2100	2000x2800	1400		3950
	1.6m/s				1500		4100
1600 kg (22 persons)	1m/s	1300x2000	1500x2300	2800x3000	1400		3950
	1.6m/s				1500		4100
2000 kg (27 persons)	1m/s	1300x2000	1600x2500	2700x3200	1400*		3950*
	1.6m/s				1500*		4100*

**Notes:** 1. Trunk dimensions are the clear dimension except the deck cutting (opening), stiffener, insulation and etc.  
2. Please contact KLEEMANN for any other specifications.



At KLEEMANN we welcome you to a new friendly futuristic age.  
It is the age of designing lifts beyond the prescribed limits,  
for people who live the feelings and feel the life.

Our aim at KLEEMANN is to create new, unique  
sensations for the lift passenger. We meet every  
passenger's need and aesthetic demands. We  
maximise passenger satisfaction, we present  
“KLEEMANN Design”.

Focused on our innovation strategy KLEEMANN special Design Team serves as the creative  
force behind the development of elevators for your challenging projects.  
Our designers combine solution-oriented design with a service-driven approach, providing:

- High quality virtual proposals
- Digital animation of your project
- Architectural design assistance directly with you
- Architectural assistance to determine materials
- On site visit/feedback from you

## Design options for passenger elevators

FUTURE TREND T710 | 2 Andreas Zapatinas I design



FUTURE TREND T510 | 2 Andreas Zapatinas I design



KLEEMANN Design is about transforming the elevator experience into a new value for the people,  
the building, and the environment.

FUTURE TREND T310 | 3 Andreas Zapatinas I design



FUTURE TREND T120 | 2 Andreas Zapatinas I design





Design options for scenic elevators

Polygonal Panoramic Mehrseitige Panorama Kabine



Mushroom Panoramic Muschelförmige Panorama Kabine



Curved Panoramic Halbkreis Panorama Kabine



Round Panoramic Runde Panorama Kabine



Design options for crew and goods elevators

MODERN LIFE L310 1



MODERN LIFE L310 2



KLEEMANN Design is so versatile that can cover every prerequisite, adapt regulations and surpass any obstacle and restriction. Contact us at [marine@kleemannlifts.com](mailto:marine@kleemannlifts.com) for custom-made solutions.



View some of the projects KLEEMANN undertook for ferries, luxury yachts and oil rigs.

CAT D RIGS

Oil-rig info      Songa Offshore, Norway  
KLEEMANN info    4 goods-passenger elevators, 10tons



F/B ELYROS

Ship info      ANEK Lines, Greece  
Length        192 mtrs  
Width         27 mtrs  
Speed         24 knots  
Passengers    1874  
KLEEMANN info    3 passenger elevators

PROJECT CZAR

Ship info      Private Cruise  
Length        120 mtrs  
Width         17 mtrs  
Speed         18 knots  
Passengers    54  
KLEEMANN info    5 passenger elevators



MARAN HERMES OIL TANKER

Ship info      Maran Gas, Greece  
Length        274 mtrs  
Width         48 mtrs  
Speed         7 knots  
KLEEMANN info    1 crew elevator



KLEEMANN has a global service network and covers technical support to all major ports. China, United Arab Emirates, Netherlands, Germany, Saudi Arabia, United Kingdom, South Africa, Australia are few of the 100 countries where you can find 24/7 service for KLEEMANN products.

Proud member of:



**[www.kleemannlifts.com](http://www.kleemannlifts.com)**

**Contact us at  
[marine@kleemannlifts.com](mailto:marine@kleemannlifts.com)**

While every effort has been made to ensure information accuracy,  
KLEEMANN bears no responsibility for typographic errors or omissions.

Copyright © KLEEMANN 2017

